

Streamvault SV-100E

All-in-one security appliance

The Streamvault™ SV-100E all-in-one appliance is designed to help you secure remote sites quickly and easily. It allows you to deploy a Security Center unified security system with video surveillance and access control, and perform local monitoring and recording.

Guaranteed performance

- up to
> **16**
cameras
- up to
> **16**
readers
- up to
> **16**
ALPR
cameras
- up to
> **2TB**
storage



Key features

Turnkey appliance with Genetec™ Security Center pre-installed

Local recording and monitoring of video, access control and other security events

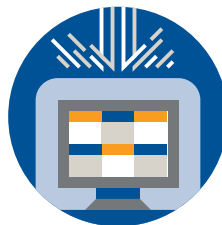
Machine learning endpoint protection

3-year hardware warranty with 1-year advance replacement

Benefits



Fully unified – The Streamvault SV-100E unifies your security in a single compact appliance. This allows you to record video and monitor entries and exists without deploying multiple devices.



Protect your security system – Streamvault appliances help you build a resilient security system that protects your data and operations. Our cyber security experts stay vigilant on evolving threats and help identify and address new vulnerabilities promptly.



Versatile format – Whether you are looking to deploy a system at a single site, or centralize monitoring across hundreds of remote sites, the SV-100E provides a standardized solution that can be quickly deployed anywhere.

Applications

Retail

Centralize security across your remote stores with the Streamvault SV-100E. Its compact size, energy efficiency and all-in-one capabilities allow you to standardize your processes across your entire chain.

Banking

Secure small service points and unify video with access control to and POS to boost your team's efficiency. The SV-100E Series' small size makes it perfect for location where space is at a premium.

Law enforcement

Implement a digital recording system for interviewing suspects with our Interview Room application. This turnkey solution increases your agency's efficiency when solving crimes.

Technical specifications

OS
Windows 10 IoT Enterprise LTSC

Processor
Intel® Core™ i3

Memory
16 GB DDR4

Ethernet
On-board 1Gb network adapter

Peripherals
Up to 4x USB 3.1
2x USB 2.0

Display
1x HDMI
1x DisplayPort

Mechanical and environmental

Power supply
65W (Max 222 BTU/hr)

BTU
222 BTU/hr

Operating temperature
50°F to 95°F (10°C to 35°C)

Operating humidity
5 - 90% (non-condensing)

Dimensions
1.4" x 7.0" x 7.2" (36 mm x 178 mm x 182 mm)

Weight
2.6 lbs (1.2 kg)

Certifications
IEC 60950-1, European Norm EN 60950-1,
CISPR 22/CISPR 24, EN55022/55024

Storage

Drive type
2.5" SATA drive

OS drive
1x 256 GB M.2 SSD

Maximum data storage
2 TB (raw); 1.8 TB (usable)

Cybersecurity

Endpoint protection
BlackBerry Protect machine learning
antivirus

Hardened image
200+ security settings changed by default

Maintenance
Verified Windows updates
Connectd services for Genetec software
and device firmware updates

Warranty and support

Hardware warranty
3-year warranty with 1-year advance
replacement and next business day on-site
service

Security Center support
Latest version

