

# Streamvault SV-1000E

## Turnkey security appliance

The Streamvault™ SV-1000E appliance is a cost-effective rackmount solution designed for mid-sized security systems. It helps you move to a unified security system combining video surveillance, access control, automatic license plate recognition, communications, intrusion and analytics in a single appliance.

### Guaranteed performance

up to **> 300 Mbps** total throughput

up to **> 2000** readers

up to **> 75** ALPR cameras

up to **> 60 TB** storage



## Key features

Turnkey appliance with Genetec™ Security Center pre-installed

Video enterprise-grade SATA storage with RAID 5 configuration

iDRAC9 Basic for local and remote server management

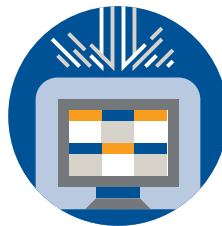
Machine learning endpoint protection

3-year hardware warranty with Keep Your Drive and Genetec Assurance with next business day on-site service

## Benefits



**Get up and running faster** – The SV-1000E appliance accelerates new system deployment. With Security Center pre-loaded and guaranteed performance, you can move to unified security faster.



**Protect your security system** – Streamvault appliances help you build a resilient security system that protects your data and operations. Our cyber security experts stay vigilant on evolving threats and help identify and address new vulnerabilities promptly.



**Simplified maintenance** – The SV-1000E is delivered with built-in tools to monitor system health and simplify updates. It reduces service calls and makes it easy to take full advantage of the latest Security Center capabilities.

## Applications

### Retail

The SV-1000E lets you unify your video surveillance with point-of-sale systems, and provides a standardized turnkey solution for repeatable deployment across locations.

### Education

Combine video surveillance, access control and intercoms in a single device with the SV-1000E. And with Security Center Mobile pre-loaded, you can access your cameras from anywhere.

### Corporate security

Monitor entries and exits and review video surveillance videos from the same interface. The SV-1000E is the perfect security appliance for office environments, allowing you to efficiently protect staff, visitors and assets.

## Technical specifications

### OS

Windows Server 2022

### Processor

SV-1030E-R3:  
1x Intel® Xeon® E-2334  
Passmark: 13,189

### Memory

16 GB DDR4 (2 × 8 GB DDR4)

### Ethernet

SV-1030E-R3: 2x 1GbE RJ45

### Peripherals

SV-1030E-R3: 1x USB 2.0 + 2x USB 3.0

### Video output

SV-1030E-R3: 1x VGA

### Integrated Dell Remote Access Controller iDRAC 9 basic

### Performance

Recording throughput: 250 Mbps  
Redirection throughput: 40 Mbps  
Playback throughput: 10 Mbps

## Mechanical and environmental

### Operating temperature

50°F to 95°F (10°C to 35°C)

### Operating humidity

5 - 90% (non-condensing)

### Compliance standards

Regulatory IEC 60950-1, European Norm EN 60950-1, CISPR 22/CISPR 24, EN55022/55024

## Cybersecurity

### Endpoint protection

BlackBerry Protect machine learning antivirus

### Hardened image

200+ security settings changed by default

### Maintenance

Verified Windows updates  
Connected services for Genetec software and device firmware updates

## Storage

### Drive type

Hot-swap 3.5" SATA drives

### OS drive

SV-1030E-R3:  
1x 480GB SSD

### Available drive sizes

4TB, 8TB, 12TB, 16TB, 20TB SATA

### RAID controller

SV-1030E-R3:  
PERC H730P (2GB NV Cache)

### Data RAID level

RAID 5; RAID 6 & 10 available as options

### Maximum data storage

120 TB (raw); 90.9 TB (usable)

## Warranty and support

### Hardware warranty

3-year warranty with Keep Your Drive and Genetec Assurance with next business day on-site service

### Security Center support

Current and two previous versions (N-2)

## Models

Model	Form factor	Bays	Dimensions (W x D x H)	Max weight	Power (100-240v)
SV-1030E-R3	1U	4 (3 archive drives)	19" × 23.98" × 1.7" (482mm × 609mm × 43mm)	26.89 lb (12.2 kg)	1x 450W

\*Hardware specifications are subject to change. Units provided will be equivalent or superior to what is shown in this document.