

AIVIO

RELIEF VALVE



Material: steel

Relief valve: direct-acting

Use and Operation:

The relief valve provides overload protection in a fast and accurate way: when it reaches pressure setting, the valve opens allowing pressure relief in order not to exceed this setting.

Materials and Features:

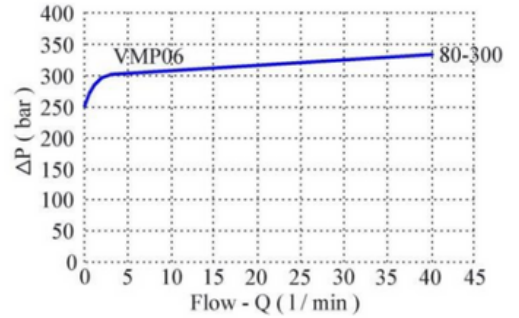
Body: zinc plate steel
 Internal parts: hardened and ground steel
 Seals: BUNA N standard
 Tightness: minor leakage

Application:

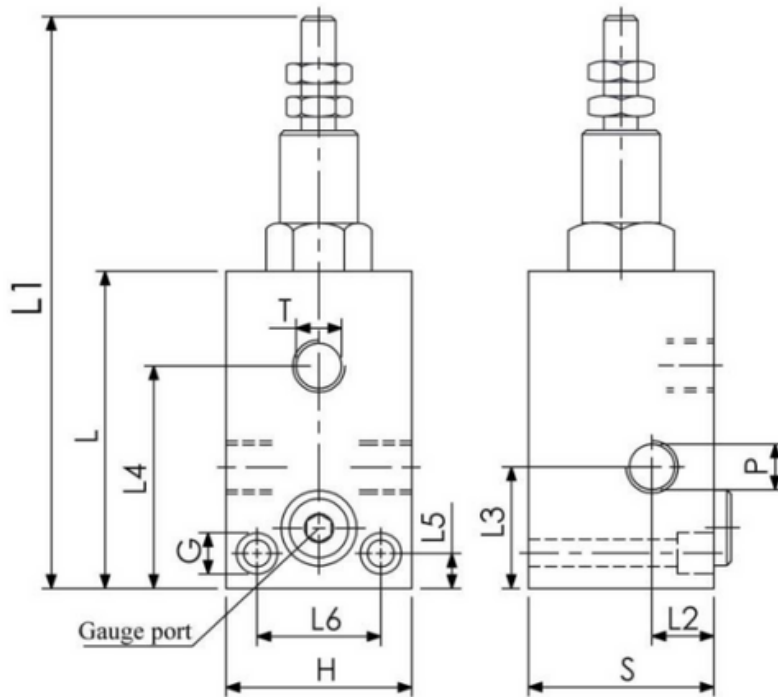
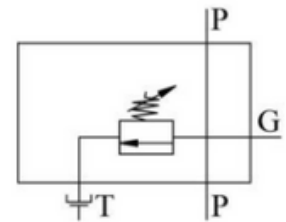
Connect circuit port with pressure to P and tank port to T. Port P is reversed.

Pressure-Flow curves

(Oil temperature: 50°C, Oil viscosity: 30 cSt)



Oil circuitry



TYPE	Max flow (L/min)	Max Press (bar)	L (mm.)	L1 (mm.)	L2 (mm.)	L3 (mm.)	L4 (mm.)	L5 (mm.)	L6 (mm.)	G (mm.)	H (mm.)	S (mm.)	P-T (BSPP)	Gauge (BSPP)	Wt.(kg.) approx.
VMP06.N.80300	40	300	55	117	12	15	35.5	/	/	/	30	40	3/8"	1/4"	0.5
VMP08.N.50250	70	250	77	139	30	29.2	54	8.5	30	6.5	45	45	1/2"	1/4"	1.1
VMP12.N.50250	120	250	92	154	32	35	68	10	32	8.5	50	50	3/4"	1/4"	1.5
VMPP16.N50400	80	400	103	177	23	63	/	23	30	25.4	60	80	1"	1/4"	3.2