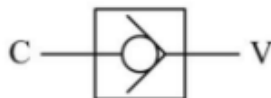


AIVIO

IN LINE CHECK VALVE

4510-20.0601.0N

U06.006

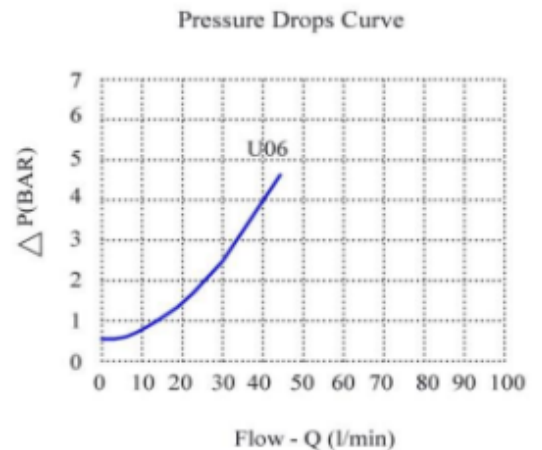


Applications:

This in line check valve feature a hardened poppet that allows free flow in one direction (V to C) while blocking flow in the other direction (C to V). This helps to prevent damage caused by fluid back pressure and isolate section of the system.

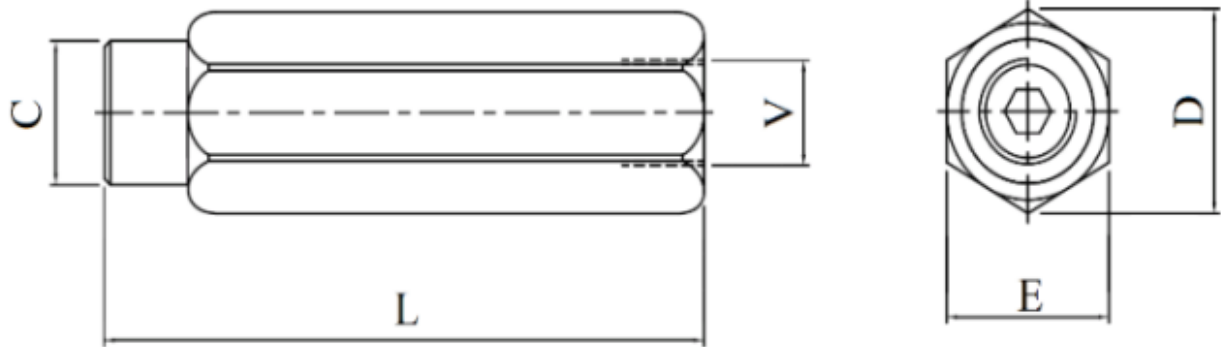
Materials and features:

Body:	Zinc plate steel
Internal parts:	Hardened and ground steel
Max. working pressure:	250 bar
Max. holding pressure:	400 bar



On request:

Different cracking pressure: 1-3-5-8 bar (please specify the desired cracking pressure in the product description). Set pressure is used to keep a hydraulic system under pressure.

AIVIO**IN LINE CHECK VALVE**

TYPE	Max Flow (l/min)	Cracking Pressure (bar)	L (mm.)	E (mm.)	D (mm.)	V-C (BSPP)	Approx.Wt. (kg.)
U06.006	45	0.4	68	24	26.5	3/8"	0.184
U06.065	45	4.5	68	24	26.5	3/8"	0.184
U06.072	45	5	68	24	26.5	3/8"	0.184
U08.006	70	0.4	77	30	34	1/2"	0.322
U08.043	70	3	77	30	34	1/2"	0.322
U08.072	70	5	77	30	34	1/2"	0.322
U12.006	110	0.4	88	36	40	3/4"	0.492
U12.043	110	3	88	36	40	3/4"	0.492
U12.072	110	5	88	36	40	3/4"	0.492
U12.116	110	8	88	36	40	3/4"	0.492
U16.006	160	0.4	105	41	46	1"	0.676
U16.072	160	5	105	41	46	1"	0.676
U16.116	160	8	105	41	46	1"	0.676
U20.015	200	1	135	50	57	1-1/4"	1.646
U20.072	200	5	135	50	57	1-1/4"	1.646
U20.116	200	8	135	50	57	1-1/4"	1.646
U24.015	300	1	145	65	73	1-1/2"	1.95
U24.072	300	5	145	65	73	1-1/2"	1.95
U24.116	300	8	145	65	73	1-1/2"	1.95
U32.015	650	1	150	70	80	2"	2.726