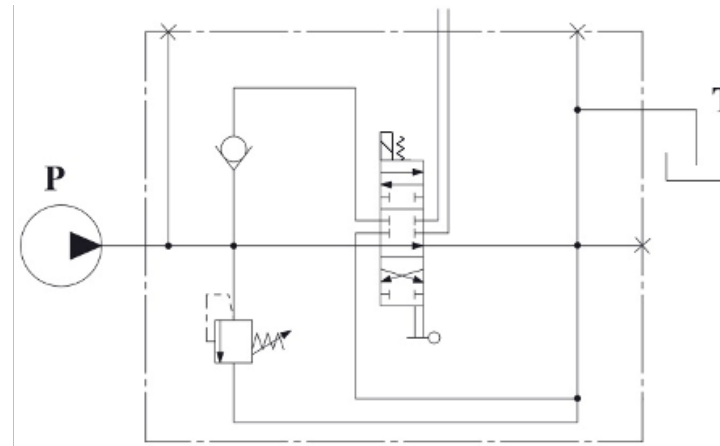
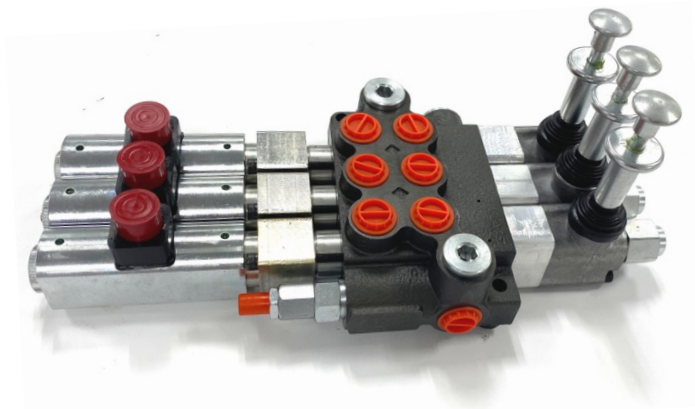


DZ50
Solenoid cum Lever Valve

STANDARD CIRCUIT



R: Return to tank

Maximum pressure (port P)	bar	250
Maximum pressure (A,B)	bar	300
Maximum back pressure on T	bar	20
Recommended maximum flow rate	l/min	50
Working temperature range	°C	-20~80
Internal Leakage (standard) A(B)>T P=100 bar	cm ³ /min	18
Fluid viscosity range	cSt	15~75
Recommended filtration	µm	25
Max. Contamination Level		-/19/16 ISO 4406
Spool Stroke	mm	3,2
Actuating Force	N	<100

DZ50 series valve features a dual control achieved by double solenoid with spring return to neutral position and manual hand lever for emergency over-ride. Each valve is fitted with a main pressure relief and load check valve.

TYPE	Max. flow l/min	Max. Pressure w(bar)	P (BSPP)	T (BSPP)	A (BSPP)	B (BSPP)
DZ50	50	250	1/2"	1/2"	1/2"	1/2"