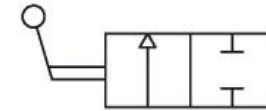


4220-20
DS

Material: Carbon steel

Maximum pressure: See table below



Specifications:

Type: ball bar 2-way

Body: block or round

Material: AISI 12L14 (block body) or A105 (round body)

Size: from DN6 to DN25 (block body) or from DN32 to
DN40 (round body)

O-rings: NBR, FPM, MQV, EPDM, FFKM

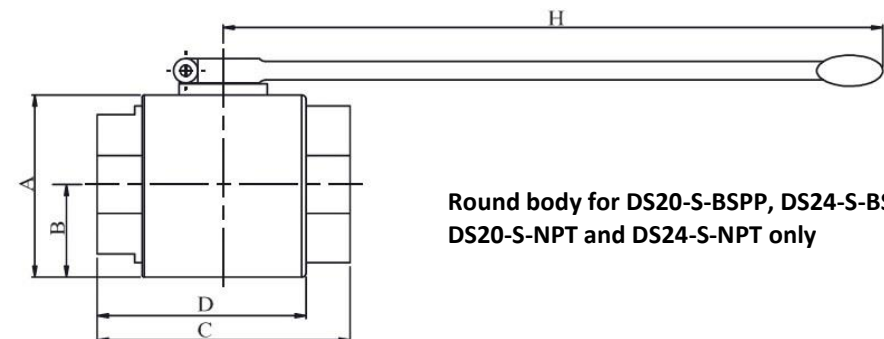
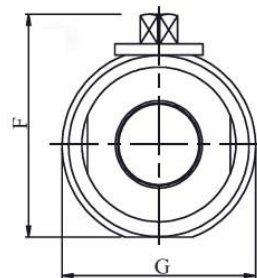
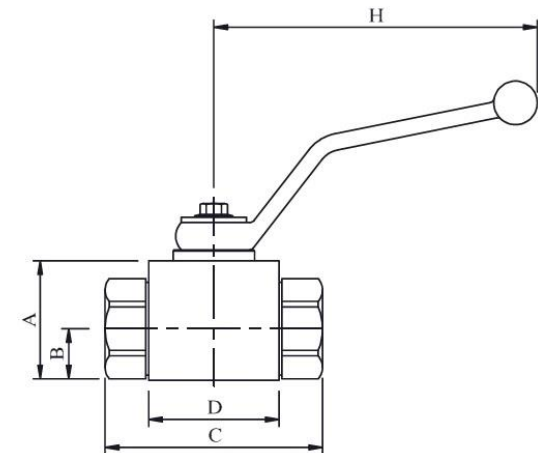
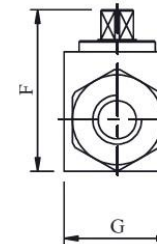
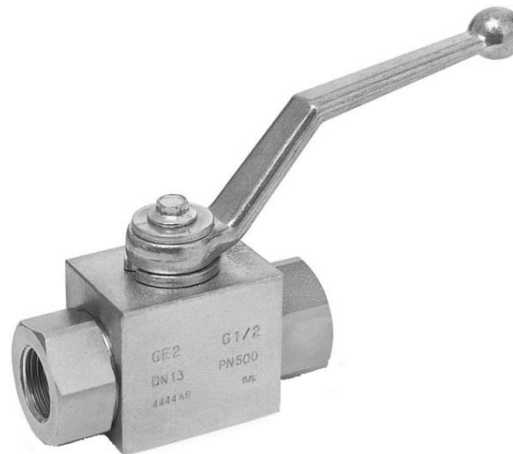
Ball seal: POM

Adapter & steam seal: NBR70 (BUNA)

Operating pressure: 350-500 bar depending on valve size

and seal materials selected

Temperature range: -10°C~+100°C depending on seal
material selected

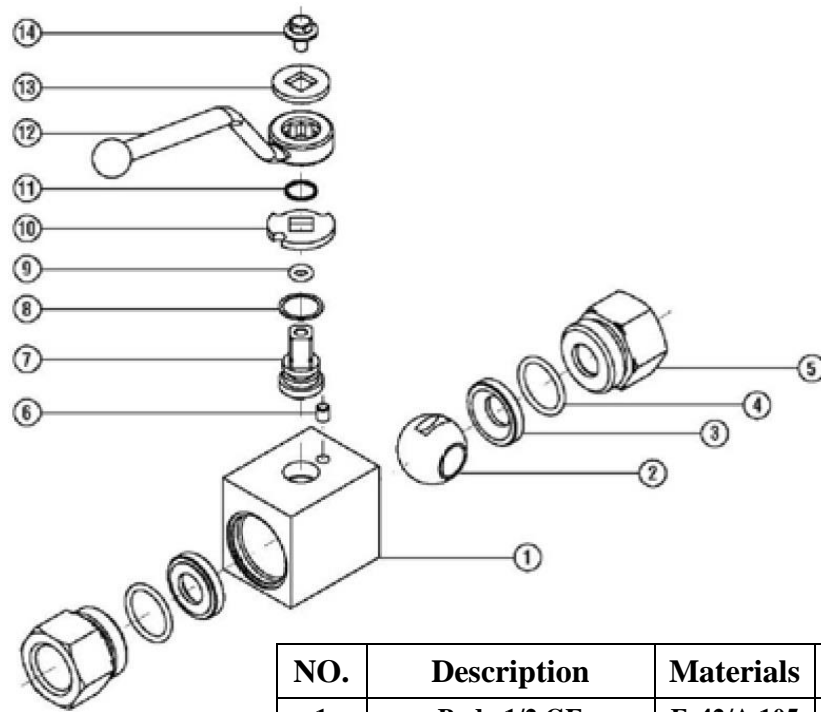


**Round body for DS20-S-BSPP, DS24-S-BSPP,
DS20-S-NPT and DS24-S-NPT only**

TYPE	PN (bar)	DN	A	B	C	D	F	G	H	Ports (BSPP)	Wt. (kg) approx.	Remark
DS04-S-BSPP	500	6	35	14	71	42	49	30	110	1/4"	0.50	
DS06-S-BSPP	500	10	40	17	73	44	54	35	110	3/8"	0.65	
DS08-S-BSPP	500	13	43	18	83	48	57	37	110	1/2"	0.75	
DS12-S-BSPP	450	20	55	23	95	63	73	45	180	3/4"	1.40	
DS16-S-BSPP	350	25	65	29	112	67	83	55	180	1"	2.20	
DS20-S-BSPP	350	32	82.5	42	115	95	101	88	300	1-1/4"	3.75	full bore
DS20R-S-BSPP	350	25	65	29	121	67	83	55	180	1-1/4"	2.25	reduce bore
DS24-S-BSPP	350	40	97.5	48	131	108	115	102	300	1-1/2"	5.85	full bore
DS24R-S-BSPP	350	25	65	29	124	67	83	55	180	1-1/2"	2.35	reduce bore

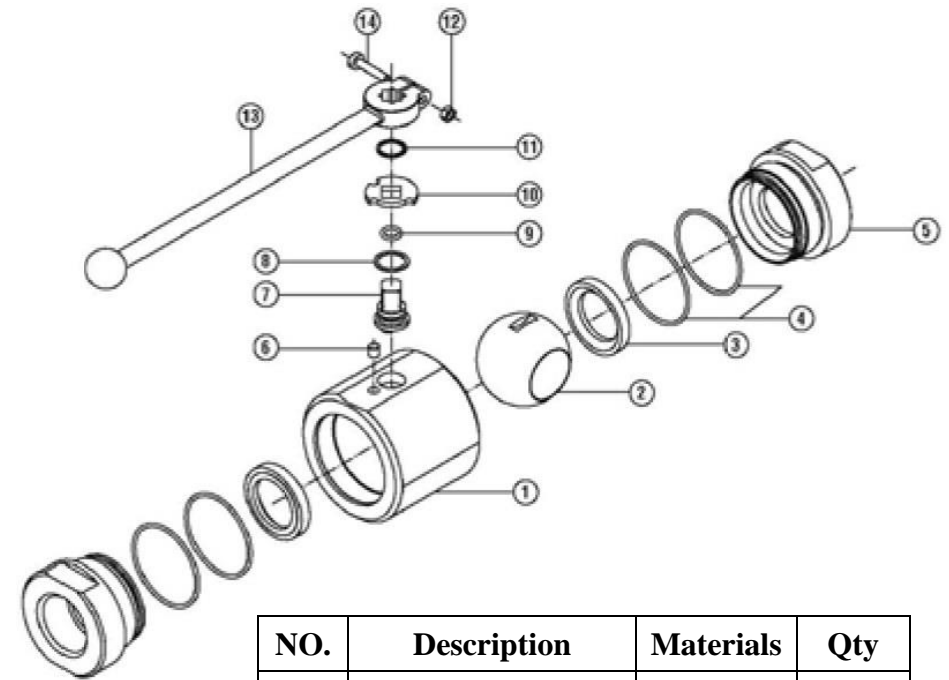
TYPE	PN (bar)	DN	A	B	C	D	F	G	H	Ports (BSPP)	Wt. (kg) approx.	Remark
DS04-S-NPT	500	6	35	14	71	42	49	30	110	1/4"	0.50	
DS06-S- NPT	500	10	40	17	73	44	54	35	110	3/8"	0.65	
DS08-S- NPT	500	13	43	18	83	48	57	37	110	1/2"	0.75	
DS12-S- NPT	450	20	55	23	95	63	73	45	180	3/4"	1.40	
DS16-S- NPT	350	25	65	29	112	67	83	55	180	1"	2.20	
DS20-S- NPT	350	32	82.5	42	115	95	101	88	300	1-1/4"	3.75	full bore
DS20R-S- NPT	350	25	65	29	121	67	83	55	180	1-1/4"	2.25	reduce bore
DS24-S- NPT	350	40	97.5	48	131	108	115	102	300	1-1/2"	5.85	full bore
DS24R-S- NPT	350	25	65	29	124	67	83	55	180	1-1/2"	2.35	reduce bore

Squire body exploded



NO.	Description	Materials	Qty
1	Body 1/2 GE	Fe42/A 105	1
2	Ball 1/2 GE	1.0737	1
3	Seal ball 1/2 GE	POM	2
4	O-ring	NBR	2
5	Adapter 1/2 Gas GE	1.0737	2
6	Spine	1.0737	1
7	Stem 1/2 GE	1.0737	1
8	Seal-stem	POM	1
9	O-ring	NBR	1
10	Washer	Fe37	1
11	Seeger	UNI 3545	1
12	Handle SW9 GE	ZAMA	1
13	Washer	Fe37	1
14	Screw	1.0737	1

Round body exploded view



NO.	Description	Materials	Qty
1	Body 1/2 GE	Fe42/A 105	1
2	Ball 1/2 GE	1.0737	1
3	Seal ball 1/2 GE	POM	2
4	O-ring	NBR	2
5	Adapter 1/2 Gas GE	1.0737	2
6	Spine	1.0737	1
7	Stem 1/2 GE	1.0737	1
8	Seal-stem	POM	1
9	O-ring	NBR	1
10	Washer	Fe37	1
11	Seeger	UNI 3545	1
12	Handle SW9 GE	ZAMA	1
13	Washer	Fe37	1
14	Screw	1.0737	1