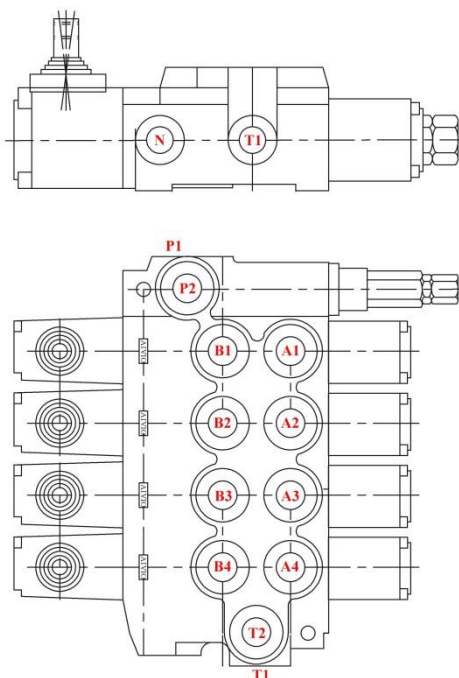


**4000-40**  
**DP40**



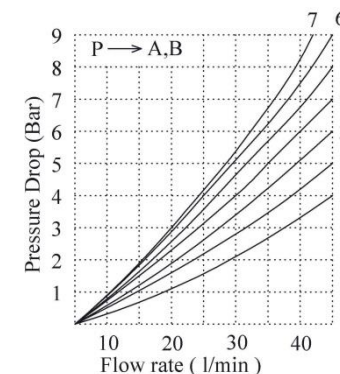
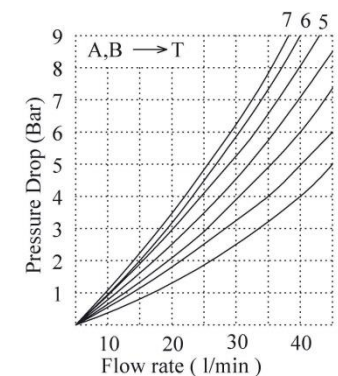
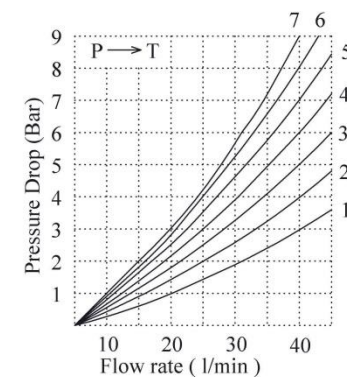
### Specifications:

1. Valve mono-block
2. Mounting: 2 bolts M8
3. Fluid medium: mineral oil based
4. Viscosity: 12~800mm<sup>2</sup>/s permissible range
5. Working temperature: -15°C~+80°C
6. Filtration: Oil contamination 10 to NAS1638
7. Max. operating pressure: P=250 bar  
T=50 bar  
A, B=300 bar
8. Internal leakage: 5cm<sup>3</sup>/min @ 100 bar
9. Nominal flow: 30 to 40l/min
10. Spool stroke: ±6mm
11. Actuating force: <200N in spool axis direction

### Description:

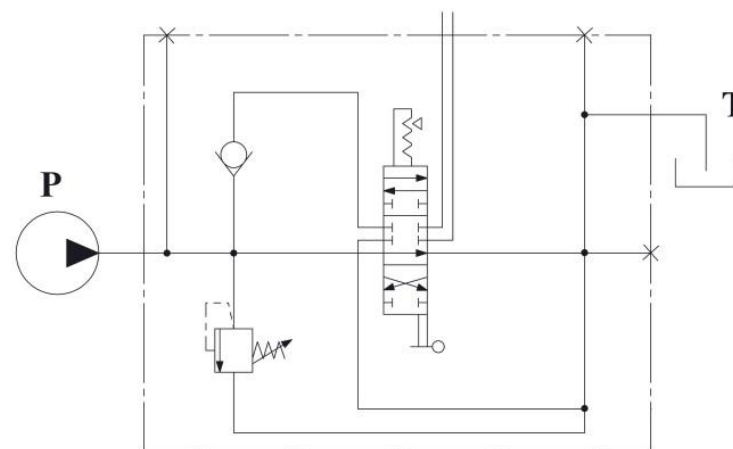
For starting, controlling and stopping the working fluid between the generator of pressured flow, the consumers and the tank.

TYPE	Max. flow l/min	Max. Pressure (bar)	P1 (BSPP)	P2 (BSPP)	T1/N (BSPP)	T2 (BSPP)	A (BSPP)	B (BSPP)	~ Weight KGS
DP40/1P-*	40	250	1/2"	<b>NO</b>	1/2"	<b>NO</b>	3/8"	3/8"	2.40
DP40/2P-*	40	250	1/2"	1/2"	1/2"	1/2"	3/8"	3/8"	4.20
DP40/3P-*	40	250	1/2"	1/2"	1/2"	1/2"	3/8"	3/8"	6.00
DP40/4P-*	40	250	1/2"	1/2"	1/2"	1/2"	3/8"	3/8"	7.65
DP40/5P-*	40	250	1/2"	1/2"	1/2"	1/2"	3/8"	3/8"	8.80
DP40/6P-*	40	250	1/2"	1/2"	1/2"	1/2"	3/8"	3/8"	9.50
DP40/7P-*	40	250	1/2"	1/2"	1/2"	1/2"	3/8"	3/8"	10.90



**ORDERING CODE****DP40<sup>①</sup> / 2P<sup>②</sup> – A<sup>③</sup> 8<sup>④</sup> L<sup>⑤</sup> – D<sup>③</sup> 8P<sup>④</sup> L<sup>⑤</sup> – R<sup>⑥</sup>**

- ① Valve type
- ② Number of spool
- ③ First spool type
- ④ First spool control on 'A' port
- ⑤ First spool control on 'B' port
- ③ Second spool type
- ④ Second spool control on 'A' port
- ⑤ Second spool control on 'B' port
- ⑥ Outlet

**STANDARD CIRCUIT**

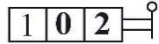
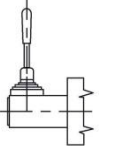
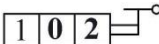
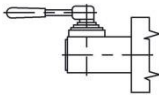

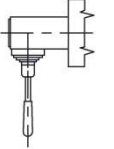

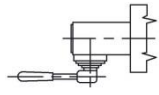
### SPOOL CONTROL 3

CODE	CONTROL SCHEME	CODE	CONTROL SCHEME
A		M	
B		N	
C		O	
D		P	
E		Q	
F		R	
G		S	
H		T	

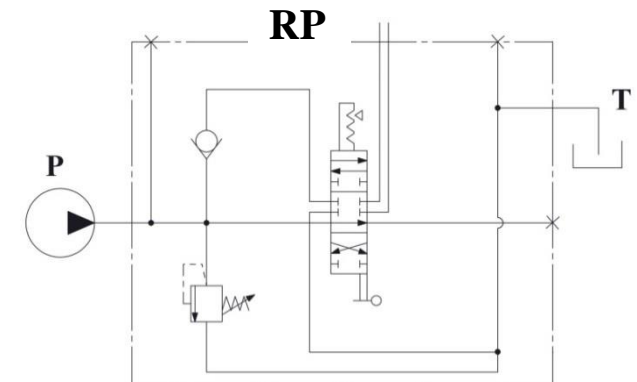
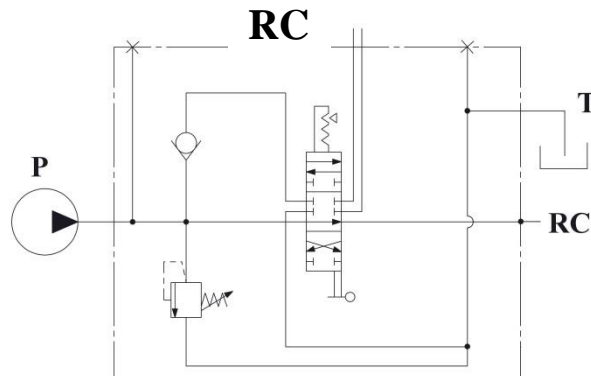
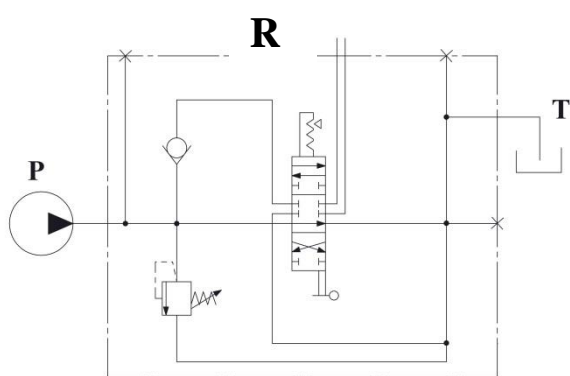
### SPOOL CONTROL 4

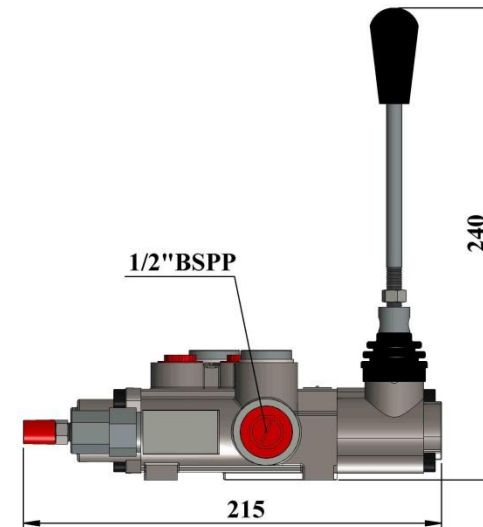
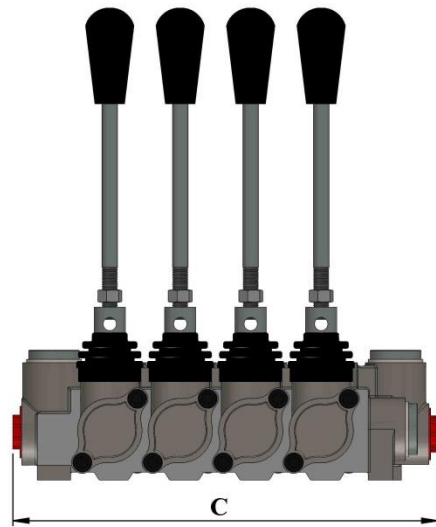
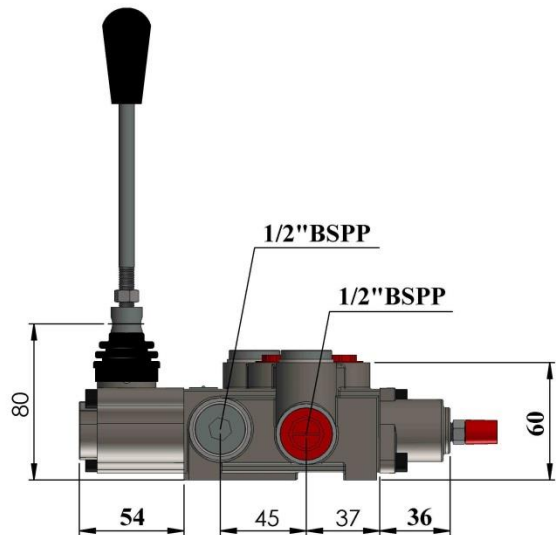
SPOOL CONTROL ON "A" PORT			
CODE	CONTROL SCHEME	DESCRIPTION	GENERAL DRAWING
1		2 positions; '1+2' spring, still at '2'	
2		3 positions; '1' detent, '2' spring	
3		3 positions; '1' spring, '2' detent	
4		2 positions; '2' spring	
5		2 positions; '1' spring	
6		2 positions; '1+2' spring, still at '1'	
7		3 positions; '1+2+3' detent	
8		3 positions; standard spring return	
9		2 positions; '0+1' detent	
10		2 positions; '0+2' detent	
11		2 positions; '1+2' detent	
8P		Spring-centered on/off pneumatic control Pressure 5~10 bar (72~145 psi)	
8H		Spring-centered on/off hydraulic control Pressure 6~20 bar (87~290 psi)	
8HE		Spring-centered on/off electrical hydraulic control Pressure 6~20 bar (87~290 psi)	
E		Microswitch	

### SPOOL CONTROL 5

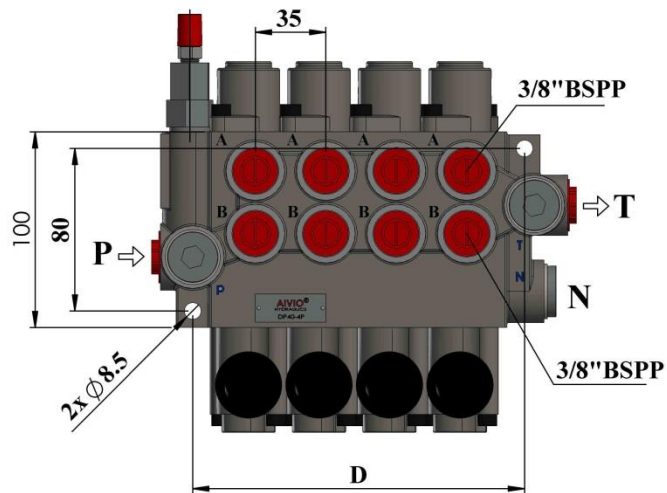
SPOOL CONTROL ON "B" PORT			
CODE	CONTROL SCHEME	DESCRIPTION	GENERAL DRAWING
L		Standard control hand lever vertical	
L1		Standard control hand lever can be turned 180°	
L2		Standard control hand lever vertical	
L3		Standard control hand lever can be turned 180°	

### SPOOL CONTROL 6

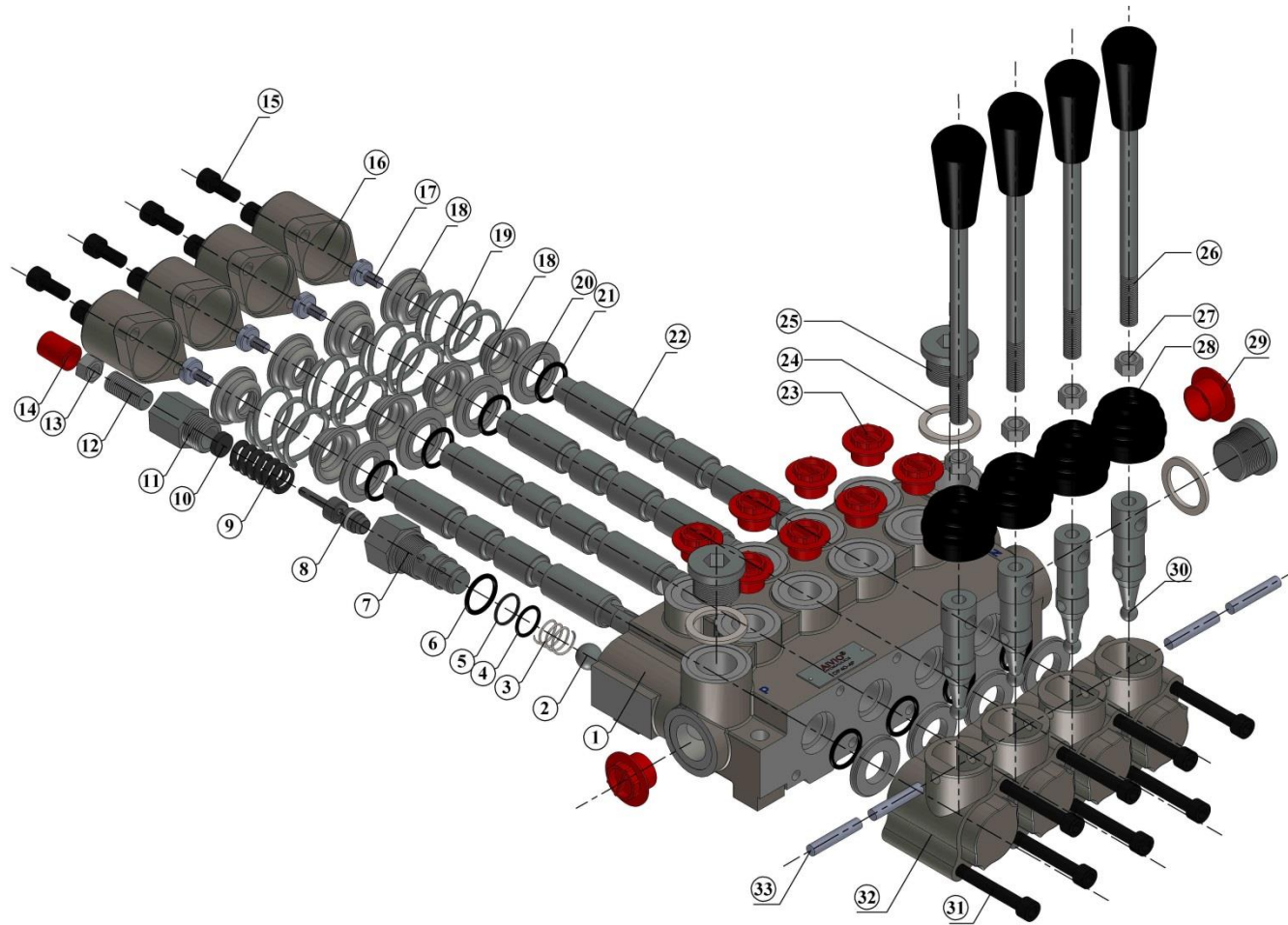




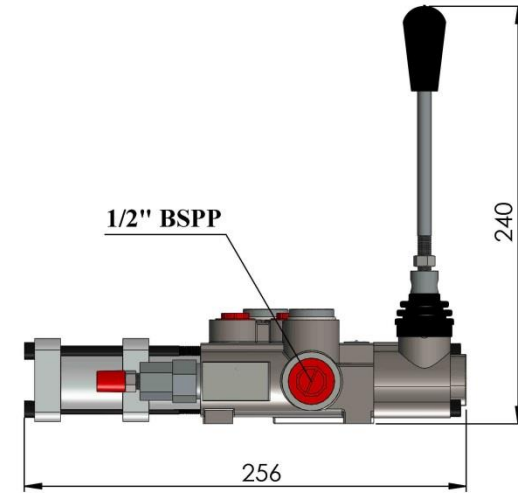
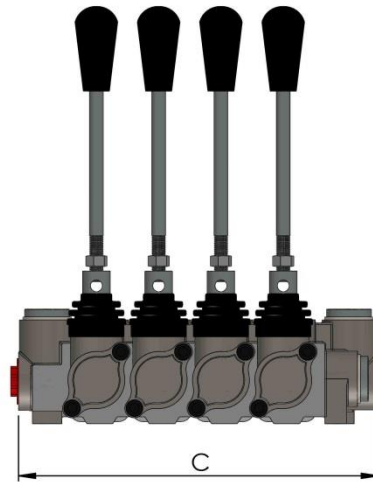
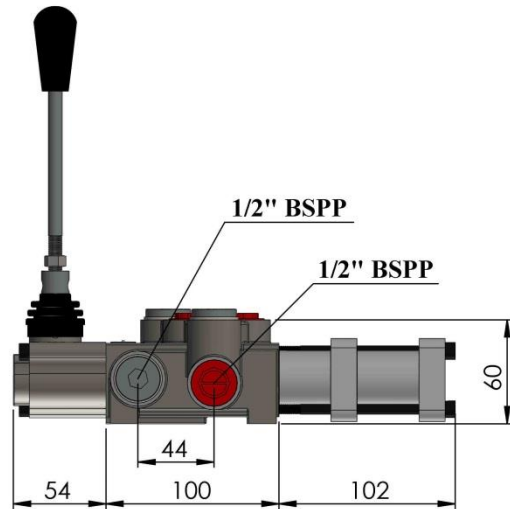
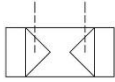
DESCRIPTION	C (mm)	D (mm)
DP40/1P	85	60
DP40/2P	129	97
DP40/3P	164	132
DP40/4P	199	167
DP40/5P	234	202
DP40/6P	269	237
DP40/7P	304	272



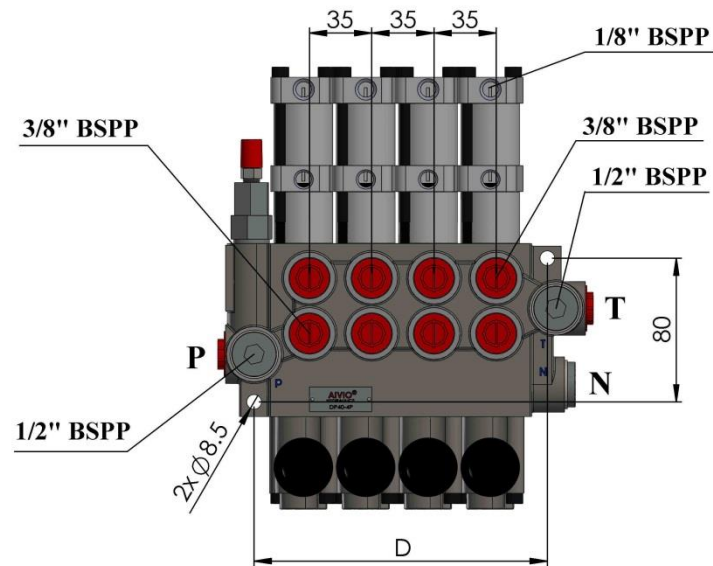
NO.	Description	Part Number	Qty
1	Body	40004001	1
2	Ball	40004002	1
3	Spring	40004003	1
4	O-ring	40004004	1
5	Plastic plate	40004005	1
6	O-ring	40004006	1
7	Body, Cartridge	40004007	1
8	Plunger	40004008	1
9	Spring	40004009	1
10	Pressure Cap	40004010	1
11	Body	40004011	1
12	10mm adjust screw	40004012	1
13	10mm nut	40004013	1
14	Screw cap	40004014	1
15	M6x15 TAP screw	40004015	2x*P
16	Spring cap end	40004016	1x*P
17	Screw	40004017	1x*P
18	Spring cap	40004018	2x*P
19	Spring	40004019	1x*P
20	Steel ring	40004020	1x*P
21	O-ring	40004021	1x*P
22	Valve spool	40004022	1x*P
23	3/8" plastic cap	40004023	2x*P
24	Plug	40004024	3
25	1/2" BSPP plug	40004025	3
26	Control hand lever	40004026	1x*P
27	8mm nut	40004027	1x*P
28	Rubber cover	40004028	1x*P
29	1/2" Plastic cap	40004029	2
30	Stroke plunger	40004030	2x*P
31	M6x50 TAP screw	40004031	2x*P
32	Lever Cap	40004032	2x*P
33	6mm Pin	40004033	2x*P



### Pneumatic Control 8P



DESCRIPTION	C (mm)	D (mm)
DP40/1P	85	60
DP40/2P	129	97
DP40/3P	164	132
DP40/4P	199	167
DP40/5P	234	202
DP40/6P	269	237
DP40/7P	304	272



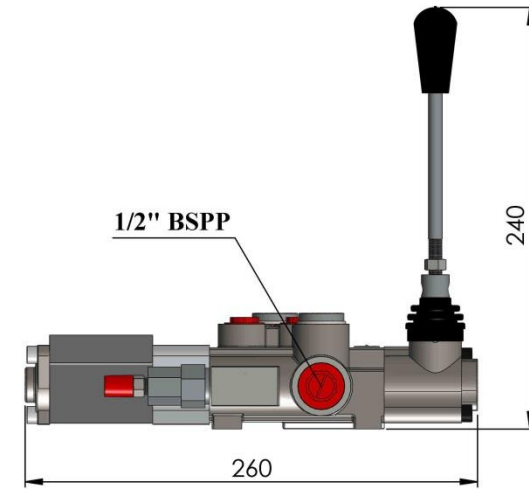
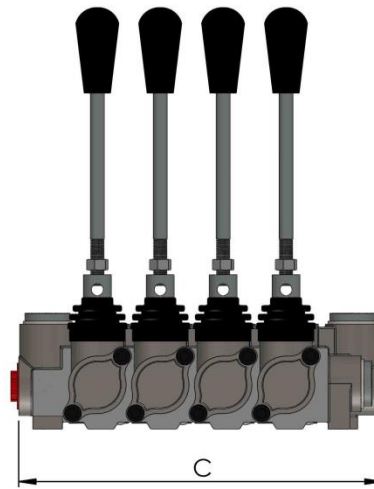
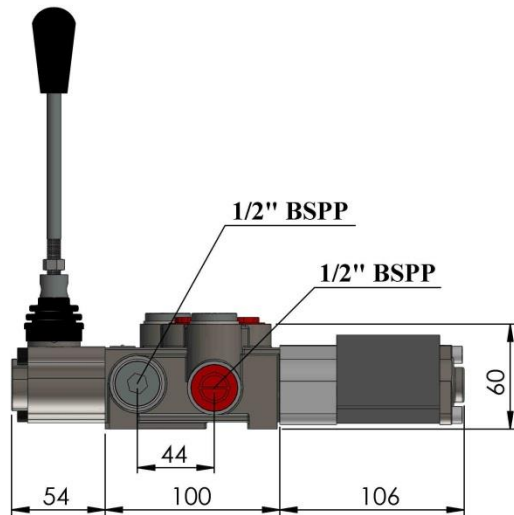
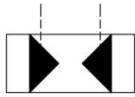
**Pneumatic Control 8P**

Item NO.	Description-ENG	QTY
1	End-Spring	2
2	Spring	1
3	Connector housing	1
4	Special connector Screw	1
5	Control Spool	1
6	Body	1
7	Spool Housing	1
8	Cover	1
9	Screw	2

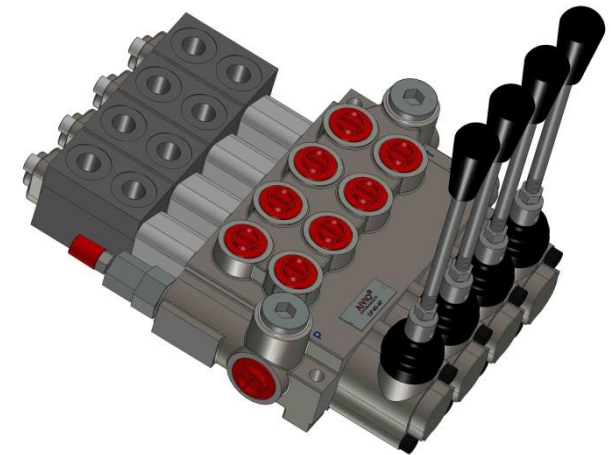
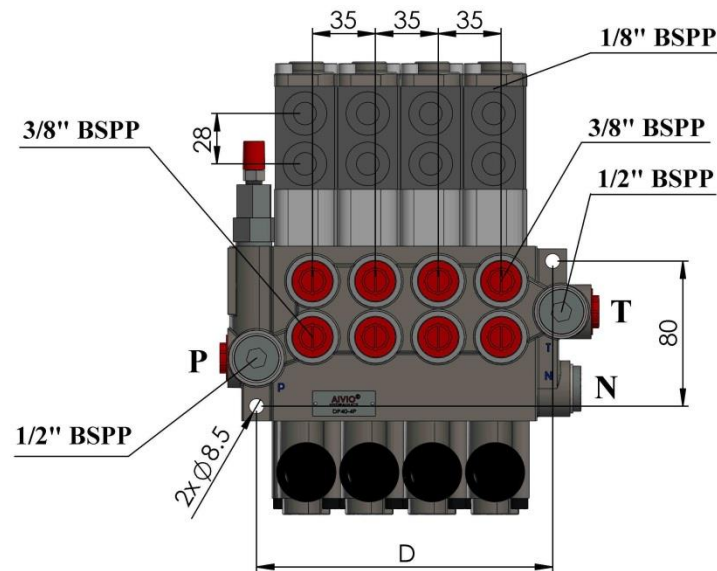




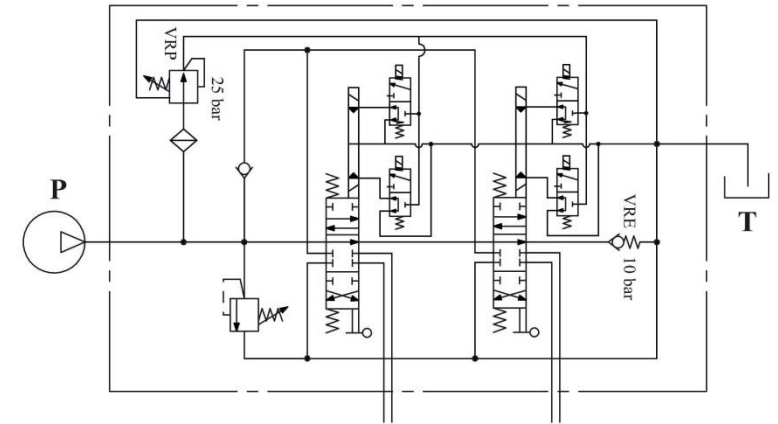
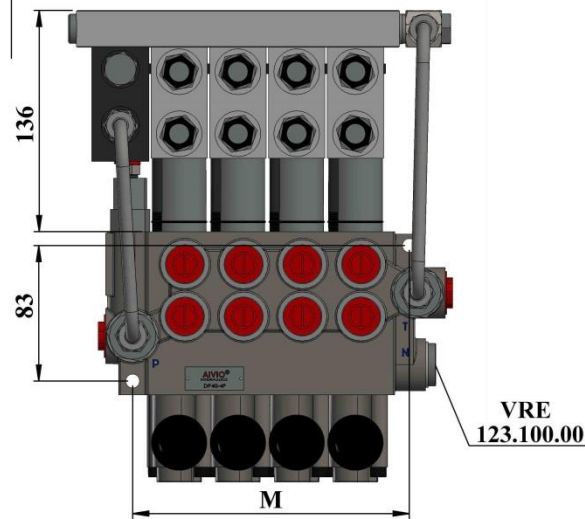
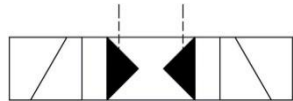
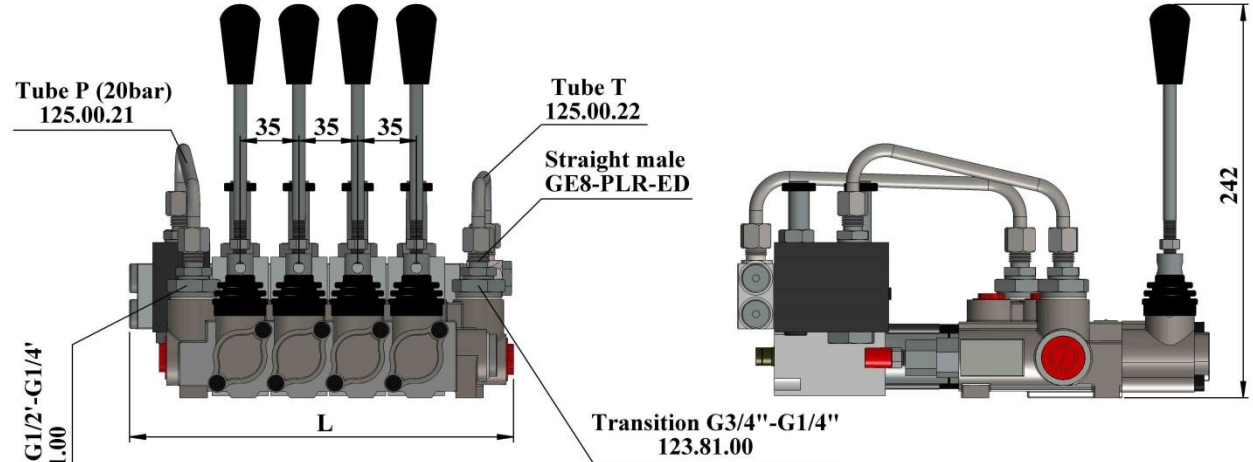
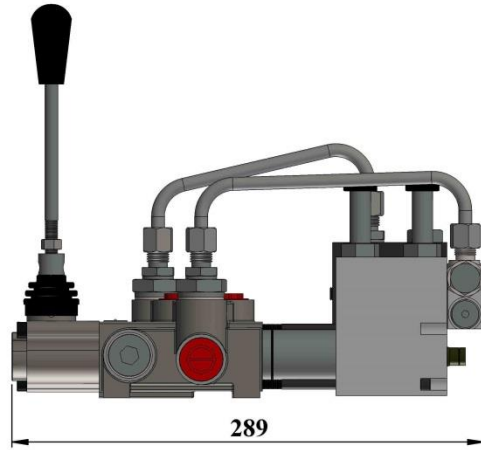
### Hydraulic Control 8H



DESCRIPTION	C (mm)	D (mm)
DP40/1P	85	60
DP40/2P	129	97
DP40/3P	164	132
DP40/4P	199	167
DP40/5P	234	202
DP40/6P	269	237
DP40/7P	304	272

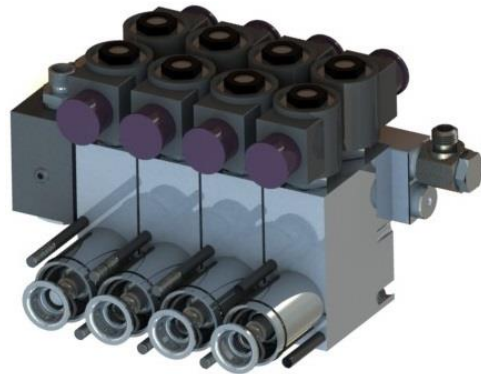


### Electrical-Hydraulic Control 8HE



DESCRIPTION	L (mm)	M (mm)
DP40/1P	130	62
DP40/2P	165	97
DP40/3P	200	132
DP40/4P	235	167
DP40/5P	270	202
DP40/6P	305	237
DP40/7P	340	272

Item NO.	Part NO.	Description-ENG	QTY
1	129.56.00.01	Collector CEED4/P80	1
2	79.90.00.00	kit ED3	4
3	-	Screw M5x40	10
4	-	Plug metal DIN3852-E-G1/4	3
5	-	ED-Ring G1/4 DIN3852	3



Hydraulic pilot pressure  
min 6 bar  
max 20 bar

Max pressure in T line: 25 bar

Solenoid operating features  
Nominal voltage tolerance:  $\pm 10\%$   
Power rating: 24W  
Duty cycle: 100%

