

# Ubon Ratchathani

## อุบลราชธานี

3วัน2คืน  
ราคาเริ่มต้น 3,499 บาท/คน



## Day 1 Travel from Bangkok - Ubon Ratchathani Province – Thung Si Muang Ubon Ratchathani Walking Street

(-/-)

**5 A.M.** Depart from Bangkok to Ubon Ratchathani Province

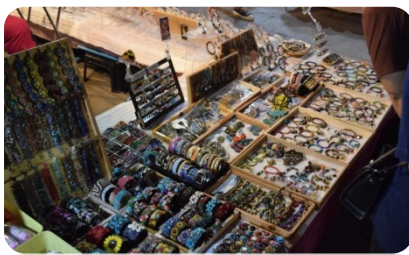
The travel time is approximately 7 hours 40 minutes.

**At noon** Arrive at Ubon Ratchathani Province and bring you have lunch at the restaurant.

**In the afternoon** Go to Check In. Check in at the **Hop Inn Hotel**. You can pack your luggage and check in to your room and rest.

**In the evening** Have lunch at the restaurant.

**6 P.M.** Then take you for a walk at **Thung Si Walking Street, Ubon Ratchathani**. It is located around Thung Si Muang Check out the evening market that is held only on weekends. The sale of goods mainly focuses on youth clothing and will be divided into different zones



such as clothing zone, decoration zone, consumer zone, and food zone. Eat This place will make you dazzle with eating meatballs like no other. At the shop, there will be people standing around the meatball shop. Dip in the dipping sauce and stand to eat as well. There is also a vegetable tray set up with the shop as well. It can be called an all-you-can-eat vegetable buffet that has it all. As for the payment, it is counted from the wood eaten and paid. There are also children standing and playing the harp, creating colors and music for the tourists as well. And what is indispensable is an artist with a hat opener. There are Doctor Khaen and Mor Lam, which can be said that they are quite rare in today's city. Free for you to choose to taste food, local snacks. and buy souvenirs for people at home.





7 P.M. Take you back to your hotel. free to invite you to relax.

## Day 2, Hole Waterfall - Tham Khuha Sawan Temple - Two Colors River - Sirindhorn Wararam Phu Prao Temple

(-/-/-)

**In the morning** Have breakfast at the hotel restaurant. After the meal, take you to the **hole waterfall**, also known as “Sang Chan Waterfall”, the name of the waterfall is named after the nature of the stream that falls through the rock hole. The origin of the name of the Saeng Chan Waterfall Called by a stream of waterfalls that sprinkles through the rock channel down into a soft white like the moonlight, especially on a full moon day. Where the moonlight will shine directly into the stone hole. Along with the mist of the stream that scattered the waterfall, it looked like a beautiful soft sparkling color. The charm of this



waterfall is beauty in harmony with nature perfectly. For you to experience the Causes of large holes caused by the erosion of the river by when it rains a lot, the water in the streams in the forest will have a lot. Along with the flowing force and speed at the same time, the current was swept away the gravel, stones, flowing with them, which would have part of pebbles flow into the hole when the gravel gets stuck in the hole and the strong current Those pebbles were running in a circle making the hole. It is a sandstone that is less tough than gravel. Expanding into a hole wider and wider. As the day enters the hole, it breaks through to become a hole in the water that flows into the hole, eventually becoming "water falling through the hole". Then take you on a journey to **Wat Tham Khuha Sawan**. It is located on Highway 2222 before reaching Khong Chiam District, about 6 kilometers. Wat Tham Khuha Sawan It is an important cultural and natural attraction of Ubon Ratchathani Province, founded by "Luang Pu Kham Khaning



Chulamane", which is used as a place Practicing the Buddhist Lent, now he has passed away. But the body did not rot. The disciples kept his body. Placed in a glass coffin for worship still take the opportunity to enjoy the view of the Mekong River and the two-colored rivers, as well as the scenery of the opposite country. Due to the location of the temple is located on a plateau along the Mekong River. Which allows

for a beautiful view of the Mekong and Mun rivers flowing together. Including the scenery Khong Chiam District Within the area of Wat Tham Khuha Sawan there are many interesting things such as the beautiful white Ubosot is beautifully carved in ornate patterns, attracts many tourists to visit here, inside Wat Tham Khuha Sawan. There is also Phra Dhamma Chedi Sri Trai Phum. Inside enshrined Beautiful Buddha statue in meditation posture, the surrounding stump garden within the temple grounds is another point that should not be missed because this temple is a Thai orchid conservation center. The stump that you notice, if you look closely, you will see beautiful, lovely orchid flowers of various varieties and colors. Moreover, there is Khuha Sawan Cave located at the back of the temple for everyone to explore Khuha Sawan Cave, it is a cave that is easy to walk to, not deep. Inside the cave is a Buddha image in the attitude of subduing Mara. Many Inside the cave is a glass sarcophagus containing the incorruptible body of Luang Pu Kham Khaning Chulamane, a famous meditation monk.



**At noon** Then take you to eat at the restaurant.

**In the afternoon** Take you to **the two-colored rivers**. It is another attraction of Khom Chiam District Ubon Ratchathani Province The appearance of two rivers that converge There was a contrast in the color of the two rivers, namely the Mun River that flows into the Mekong River. Especially during the rainy season, the flooding season will see the two rivers converge in two distinct colors on



opposite sides of the river. People call it "Mekong Si Poon, Blue Mun". In addition to seeing the wonders of the two-colored rivers Can also cruise. Along the Mun and Mekong Rivers to see the scenery of nature and people who live along the two rivers on both sides of the two-color river, "Mekong colored cement, blue dung" appearing as the river flows together into two colors. Occur in the area Don Dan at the mouth of the Moon River, Ban Wen Buek, Khong Chiam Subdistrict, Khong Chiam District Ubon Ratchathani Province Ubon Ratchathani. Where the indigo-colored Mun River flows into the Mekong River, where the color is cloudy, is cement. Born into the Mekong River with two colors of water before gradually merging and becoming the same color point where you can watch. The two-colored river is located on the riverbank slope in front of Wat Khong Chiam. At Huai Mak Village which can go by boat by parking the car at the Mekong River pier, Khong Chiam District. Then take a boat to see the beauty of the two colors river from both viewpoints. Besides watching the two-colored rivers, there are also attractions in the area such as restaurants serving fresh fish caught from the Mun and Mekong rivers. Then take you on a journey to **Sirindhorn Wararam Phu Prao Temple**, "Wat Phu Prao" or another popular name is "Glowing Temple". It is located on the hill in Sirindhorn District Ubon Ratchathani Province. At the top of the mountain, you can see the golden ubosot standing prominently. In the back of the chapel is a glowing green painting of the Kalapapruek tree, behind the temple at night. If we are lucky, we will meet the stars surrounded by the illuminated Ubosot. Adding to the amazing beauty. If you want to add more beauty. It is recommended to go on a night. Because the darker it gets, the more clearly, we can see the glow of the saplings and stars. At the back of the chapel, there is a view of the Mekong River basin, which, in addition to being able to see the Mekong River, can also see the Lao side. If we travel, we must go during the sunset. Which here is also a view to see the sunset is very beautiful as well. The glowing Kalapapruek tree was designed by the craftsman Kunakorn Parinya Punno, who personally



applied each mosaic piece. inspired by the tree of life in the movie Avatar. It uses fluorescent agents or fluorescent agents around the tree. The properties of fluorescent substances absorb sunlight during the day and release energy at night. The ubosot is modeled after Wat Xieng Thong, Laos, but is more than 1 times the width and 2 times the length. Each pillar is handcrafted. Around



the outside are a lotus pattern and various animals according to the four-lotus motto, Phra Ajarn Boonmak was the initiator. He was from the Laos Champassak side to disseminate meditation on the Tai side and settled at this Phu Prao in the years 1954-1955, where he returned to Laos until 1999, his disciple, Phra Kru Kamol, discovered the temple. Again, and restored to be a place of dharma practice as before. After Phrakhru Kamol Lasankhara left in 2006, Phra Kru Panya took the position of the abbot of the temple and continued the work of building the temple to the present.

**In the evening**      Take you to have dinner at the restaurant. After the meal, take you back to rest at the Hop Inn Hotel.

### Day Three Khua Noi – Sam Phan Bok – Bangkok

(-/-/-)

**In the morning**      Have breakfast at the hotel restaurant. After the meal, you can store



your luggage for check out from the hotel. Then take you to **Khua Noi or wooden bridge**, a bridge during rice fields stretching as far as the eye can see. Built for monks to walk across to alms and is used for traveling between Che Thuan Village and Ban Nong Khaen. It is located at Village No. 1, Chi Tuan Subdistrict, Khueang Nai District Ubon Ratchathani Province. In the past, the bridge was

built from wood. But after a long time, there was a breakdown and frequent repairs. Therefore, it was built and renovated to be a concrete bridge. At present, villagers still use it to travel to meet each other and also use it in the tradition of giving alms to Devo as well. There will be villagers lined up along the bridge. Standing to wait for alms to monks Independence invites everyone to look at the view of



the rice fields and walk and take pictures. Then take you to **Sam Phan Bok**, located at Ban Pong Pao, Lao Ngam Subdistrict, Pho Sai District. Ubon Ratchathani Province another tourist



attraction Created by nature, "Sam Phan Bok" is a large rapid, eroded a lot of puddles and fall by the work of the Mekong River eroding this rocky rapid. During the water season every year, which is a miracle of nature. that caused many basins, more than 3,000 waving and the opposite side that is a few meters away is the side of our neighboring country of Thailand, that is Laos. In addition to visiting Sam Phan Bok had already

seen the beauty of nature. Also saw the way of life of coexistence between Thai and Lao people along the Mekong. During the dry season, Sam Phan Bok will emerge from the water to reveal a large rocky hill in the middle of the Mekong River. The majestic beauty of the rock that has been eroded by water can be seen as an artistic picture. Some areas are big as swimming pools. Some small basins. There are different shapes such as stars, ovals, Mickey Mouse, and water-eroded rocks that look like poodle heads, beautiful and the Grand Canyon. The Grand Canyon features in the form of three thousand waving. It looks like a cliff on both sides. If you look deeper, you will see the resolution of erosion from the Mekong River. It will look like a large-small shape along the rocks along the cliff. It will make the viewers a miracle that nature has created as a gift to humans, and there are also many "legends of grandfather Jok Pu" wave holes. make a story Grandfather took his grandson to catch the area if she had to. (Shepherd is a tool for trapping fish of the northeastern people). Accidentally unable to catch fish, he uses his hands to reach for stone crabs along the Mekong River until there are many waves. Which waving in Thai means holes, so it means three thousand holes.



## NATNARA Travel

RK Biz Center Motorway-Romklao Frontage Rd., Latkrabang, Bangkok 10520

Certificate 0105562204095 licence 12/02963 Tel.062-8595241 Line: nat.nsk

---

**At noon** Have lunch at a restaurant, then take you from Ubon Ratchathani back to Bangkok. It takes approximately 7 hours 40 minutes.

**8:30 P.M.** Arrival in Bangkok

### Service Rate

	Price. -
Starting Price/person	3,499. - Baht

### This Service Fee Includes

- Room service charge
- VIP air-conditioned vans (sightseeing according to the program)
- 1 bottle of drinking water/day
- Entrance fees to places specified in the tour program
- Tour guide throughout the trip
- Travel accident insurance expenses according to the policy medical expenses in the amount of 500,000 baht per person or cause of death, the limit is 1,000,000 baht per person according to the conditions of the insurance company. which does not include health insurance.





## NATNARA Travel

RK Biz Center Motorway-Romkiao Frontage Rd., Latkrabang, Bangkok 10520

Certificate 0105562204095 licence 12/02963 Tel.062-8595241 Line: nat.nsk

---

- Insurance coverage for COVID-19 according to the policy, medical expenses up to 30,000 baht/person, covering both Thais and foreigners aged 1 - 75 years within 30 days from the date of departure. according to the conditions of the insurance company This does not include deaths from COVID-19.

- Meals as listed in the itinerary

- Standard hotel accommodation as specified in the list (2-3 persons per room)

### **This Service Rate Does Not Include**

- Minibar in the room (if any) and personal expenses other than those specified in the list

- Meals for vegetarians, vegans, or Muslims

- Additional entrance fees for foreigners based on actual payment

- Fees in the event of baggage that exceeds the weight specified by the airline or the baggage exceeds the standard size.

- Van booking fee

- fuel tax that the airline will charge more After the company has already issued air tickets.

- VAT 7% and withholding tax 3%

- Tip the driver and guide 300 Baht per person