

LAMPHUN ลำพูน



3 วัน 2 คืน
ราคาเริ่มต้น
5,100 บาท/ท่าน

CONTACT US



: [natnara.nat](https://www.natnara.nat)



: 0628595241

Day 1 Travel from Bangkok - Lamphun Province - Lamphun Walking Street

(-/-/-)

5:30 p.m. Depart from Bangkok to Lamphun Province It takes about 9 hours to travel to Lamphun Province.

At noon Stop for lunch at a restaurant on the way to Lamphun Province.

In the afternoon Arrive at Lamphun, take you to Check In and stay at The Grand Jamjuree Resort, invite you to pack your luggage and enter your room and relax at your leisure.

In the evening Have dinner at the restaurant

6 p.m. Then take you for a walk **Lamphun Walking Street** visit the evening market that is held only during the weekend Selling cute local products. You are free to choose to taste local snacks and buy souvenirs for people at home.

7:30 p.m. It's
to your hotel. invite
leisure.



time to take you back
you to relax at your

Day 2 Phra Phutthabat Phra That In Hang - Wat Phra Phutthabat Huai Tom - Kaeng Ko (-/-/-)

In the morning **Have breakfast at the hotel restaurant.** After that take you out to **Phra Phutthabat Phra That In hanging** located at Ban Nampu, Pa Sak Subdistrict, Mueang District, Lamphun Province. Lamphun Province is located on the top of the mountain is called Doi Tham Hin for the origin of the creation Phra That In hung from that Villagers saw two large stones on the edge of the burner stacked on top of each other and looked like they were about to fall from a cliff. Ten people used to push and break with wooden beams but the stone that is the top did not fall. So left 2 large stones as usual. Later, Kruba Chaiyawongsa Pattana, a famous maestro of Wat Phra Phutthabat Huai Tom, Li District, Lamphun Province, sat on the path in a vision and saw this stone, so his disciples went to look for it. It took quite a long time to meet, which this mountain is important. On the courtyard near the large rock, there is a stone mark believed to be. It is a footprint of the Buddha's footprint. Then the relics were built on top of the rock on 9 March 2014, by simulating the appearance of the Buddha image. That In hangs in Burma and built the relics on such stones, when arriving at the parking lot of Phra That area Has to walk up to about 450 meters. The first part is a smooth soil path comfortable until you arrive at the point the laterite stairs must be climbed is for the faithful tourists to make merit as well. Helping to carry the sand up to build some of the



unfinished temples. Which is considered a strange merit. No need to collect money or anything of value. Just have faith to help each other. The last part going up to Phra That In Hang is a road up the hill, but not very steep. You can walk comfortably until the top. The highest peak of the mountain is home to the relics, which are two stones painted in gold stacked. There is the top of the relics at the top. Outside, there was a small wooden fence surrounding it to prevent

anyone from going up because the relics are sacred surrounding the relics, there are statues of gods and giants in front to protect. The relics in the side part are building a pavilion of 9 Kruba comprising famous masters such as Somdej To, Luang Pu Tuad, Luang Pu Waen, Kruba Sriwichai, Krubawong, etc. Then take you on a journey to **Wat Phra Phutthabat Huai Tom** is the largest temple in Li District. It is also the village temple of the Pak Nyaw people. The entrance to the temple will have Phra Kruba Chaiwongsa Monument is located. Wat Phra Phutthabat Huai Tom has a spacious area. It is an important religious place Center for the minds of people in the Huai Tom community. The interior is unique and beautiful with Lanna's identity. Made from laterite excavated from laterite pits. Behind the temple, important places are Viharn Phra Muang Kaew. The relics are beautifully decorated as a place to contain the physique of Luang Pu Kruba Chaiwongsa Phatthana, according to legend, when the Buddha Lord Buddha has arrived in the palm trees ascended on one of the hills. There were Phaya Muang Thoen, a hermit father, and 8 other hunters who carried fresh meat to meet them, who had nothing to offer, so they brought the meat to offer. Buddha is not me the hunters then piled the meat together. The Lawa people in that area then boiled rice to offer. Somdej Phra Jom Tri then accepted me and blessed the Lawa. The Buddha. Therefore, sat in his footprints and ordered that if anyone practices what the Lord Buddha has taught, it is like being nearby. If you don't do it, it's like you're far away.” Then he gave the name there. “Huai Tom Khao” later referred to as “Huai Tom” which is the current name of Wat Phra Phutthabat Huai Tom.

At noon

Have lunch at a restaurant.

In the afternoon

Take you to **Kaeng Ko or Kaeng Ko Lake**. It is an area of

beautiful lakes located in Mae Ping National Park,

Ko Sub-district, Li District, Lamphun Province,

formed by the construction of Bhumibol Dam

after the dam was completed. In this area, the

water flooded until it became a lake. The water

from the creek of Mae Ko that meets with the

Ping River has very beautiful surroundings

because this area is surrounded by mountains

green trees Thus making it a very good place to

relax in the middle of nature. The area around Kaeng

Ko has a houseboat service. You can sit and watch the view while taking a boat to see the

surrounding scenery on both sides of the Ping River. Because around there are limestone hills

that have been eroded into stalagmites and stalactites, which are very beautiful, including

large and small animals, including a variety of fish. This scenic lake is popular with tourists

offering a variety of water activities, such as a scenic boat ride on either side of the Ping

River. Drag a houseboat along the Ping River, swim, fish, climb a cliff along the Ping River,

and can also travel to other tourist spots on both sides of the Ping River, such as a houseboat

school. Pad Tham Chang Rong cave, Wat Phra That Kaeng Soi.

At noon **Have lunch at a restaurant.** After eating, take you back to relax at **The**

Grand Jamjuree Resort.



Day 3: Wat Phra That Hariphunchai - Lamphun Community Museum - Bangkok

(-/-/-)

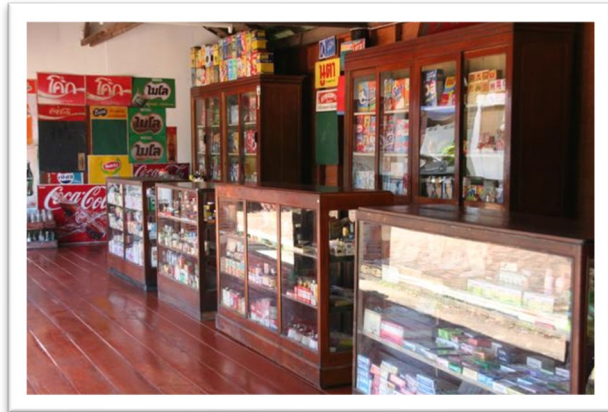


In the morning

Have breakfast at the hotel restaurant.

After eating, luggage to check out from the hotel. Then take you on a journey to **Wat Phra That Hariphunchai** is an important sanctuary in the north Sacred things that have been in the city of Lamphun for a

long time since more than a thousand years in the past Located in the heart of Lamphun away from the city hall Province, about 150 meters. There are roads surrounded on four sides, namely Attharot Road in the north, Chai Mongkhon Road in the south, the road around the city in the east. Born in the Year of the Rooster Hariphunchai inside the amulet Relics contained in a gold urn Wat Phra That Hariphunchai Woramahawihan was originally the palace of King Athitayaraj, the 33rd ruler of Nakhon Haripunchai, after Queen Jamthewi Pathom, the monarch of Haripunchai City. The walls of Phra Athitayarat's palace are divided into two layers, and the inner layer. In later times after King Athitayarat had offered his palace to be a sangharam as a cover for Buddhism when offered as a sangharam, the outer wall was demolished and a pair of lions were cast in the east arch as a lion. A large decorated statue with an open mouth is enshrined instead according to the ancient traditions of the north which is popular to build a lion guarding the temple Wat Phra That Hariphunchai Therefore, there are two walls according to the appearance of the original palace of King Athitayarat, which is around the outer temple area on the first floor and the wall is a pavilion around Phra That Haripunchai as a second-floor wall. Wat Phra That Hariphunchai Woramahawihan Located in the heart of Lamphun with roads surrounded on four sides. Built in 1651, something is interesting. The arch before entering the temple area must pass through brick arches with mortar decorated with intricate patterns. That are ancient craftsmanship of the Srivijaya period consists of a facade on the floor in front of the arch is a pair of majestic lions on a pedestal about 1 meter high. These lions were sculpted during the reign of King Athitayarat when he offered them to be the Sangkharam Luang. After passing through the arch, you will see a large viharn, called Viharn Luang. The main hall has a balcony all around and has a portico both in front and at the back. It is a new viharn built to replace the old



viharn that was destroyed by a storm in 1923. Take you to **Lamphun Community Museum** located in the city of Lamphun Behind the Hariphunchai National Museum, using the area of Khum Chao Ratchasamphanwong. This is an old building over 100 years old. It is a museum telling the long history of Lamphun city of faith Buddhism that prospered from the past until now, learn about

Lamphun through photos of people, events, and places. This is a living contemporary museum with exhibits. Lamphun city, appliances and way of life of Lamphun people in the past beautifully the exhibition area consists of 3 main parts 1. The ground floor area of the building exhibits the history of Chao Ratchasamphanwong during the reign of King Ratchasumphanthawong has lived with his family, a change in the use of Khum from the past until it became an urban museum. In addition, the old map was also enlarged to show the development of Lamphun City and old photographs that reflect the events of La Phun, such as the image of Wat Phra That Haripunchai in the past, the old royal viharn asking for the relics The image of the damage when the old royal viharn was torn down by a paddle and a picture of the way of life of La Phun people in the past, traditions, and rituals Beauty pageant in Lamphun. There is a beautiful girl is you Sheila Sri Somboon, beautiful woman Lamphun, who was the first Miss Thai. There are also displays of old artifacts, such as an antique refrigerator that uses kerosene, a camera, an old radio, a battery-operated iron, etc. Also of interest is the government lottery kiosk with old lottery tickets from 1968 from the price of 10 baht per pair until the present-day lotteries. 2. The area at the back of the building is a replica of Lamphun's old movie theater "Haripun Chairama" and a replica of a classroom showing books used in teaching at the level. Primary school, wooden desk, and chalkboard and Lamphun's first hotel, Sri La Phun Hotel. 3. The second floor of the building is an open space used for various activities of the museum such as Teaching spring harp music to youth and interested people. The walls of the building are also decorated with a picture of Father Oui who used to play the harp. One interesting picture is A picture of an American researcher who came to the study. The story of the spring harp over 40 years ago,



including showing the history of Chao Samphanthawong and interesting old houses in the city of Lamphun.

At noon **Have lunch at a restaurant.**

In the afternoon Then take you out of Lamphun and return to Bangkok, taking about 9 hours of travel time.

10 p.m. Arrive in Bangkok

Service Rate

	Price. -
Starting Price/person	5100.- Baht

This Service Fee Includes

- Room service charge
- VIP air-conditioned vans (sightseeing according to the program)
- 1 bottle of drinking water/day
- Entrance fees to places specified in the tour program



NATNARA Travel

RK Biz Center Motorway-Romkiao Frontage Rd., Latkrabang, Bangkok 10520

Certificate 0105562204095 licence 12/02963 Tel.062-8595241 Line: nat.nsk

- Tour guide throughout the trip

- Travel accident insurance expenses according to the policy medical expenses in the amount of 500,000 baht per person or cause of death, the limit is 1,000,000 baht per person according to the conditions of the insurance company. which does not include health insurance.

- Insurance coverage for COVID-19 according to the policy, medical expenses up to 30,000 baht/person, covering both Thais and foreigners aged 1 - 75 years within 30 days from the date of departure. according to the conditions of the insurance company This does not include deaths from COVID-19.

- Meals as listed in the itinerary

- Standard hotel accommodation as specified in the list (2-3 persons per room)

This Service Rate Does Not Include

- Minibar in the room (if any) and personal expenses other than those specified in the list

- Meals for vegetarians, vegans, or Muslims

- Additional entrance fees for foreigners based on actual payment

- Fees in the event of baggage that exceeds the weight specified by the airline or the baggage exceeds the standard size.

- Van booking fee

- fuel tax that the airline will charge more After the company has already issued air tickets.

- VAT 7% and withholding tax 3%

- Tip the driver and guide 300 Baht per person