

RANGE COMPOSITION

The NERT range consists of 2 electric models with one wash tank and one speed with right or left-hand loading and a maximum capacity of 100 baskets per hour.



533315

STANDARD NERT10 - HOT AIR BLOWER

RACK TYPE DISHWASHERS **ZANUSSI** PROFESSIONAL

FUNCTIONAL AND CONSTRUCTION FEATURES

- ◆ Wash tank in 316 AISI stainless steel with rounded corners, internal and external surfaces in 304 AISI stainless steel. Wash arms and jets in 304 AISI stainless steel to ensure an excellent and reliable performance. The double-skinned counter-balanced inspection doors guarantee solidity and strength.
- ◆ Wash Zone: all the soil is removed by the combination of the mechanical washing action that directs water at the washware by means of a powerful 700 litres/minute pump and the thermal action of the heating elements that guarantee a constant water temperature of between 55° and 65°C and to which the appropriate detergents are added.
- ◆ Rinse Zone: clean water is used to eliminate any trace of detergent from the washware. There is a temperature control device in the boiler that guarantees the sanitization of the washware at a temperature of no less than 85°C.
- ◆ Ease of Cleaning and Maintenance: manually removable wash arms and tank filters without the use of tools; water and electrical connections are positioned centrally on the front side of the machine to allow installation directly against a wall.

TECHNICAL DATA		
CHARACTERISTICS	MODELS	
	NERT10ERB 533314	NERT10ELB 533315
Power supply	Electric	Electric
Feeding direction	from RH to LH	from LH to RH
N° of speeds	1	1
Capacity dishes/h	1800	1800
Air emission - m³/h	500	500
Air temperature - °C	60 - 65	60 - 65
External dimensions - mm		
width	2150	2150
depth	824	824
height/with open door	1744, 2050	1744, 2050
1st wash		
temperature - °C	55-65	55-65
tank capacity - lt.	114	114
pump power - kW	1.5	1.5
Rinsing		
temperature - °C	80-90	80-90
boiler capacity - lt.	16	16
boiler power - kW	16.5	16.5
Power - kW		
installed-electric	36	36
Noise level - dBA	70	70
Net weight - kg.	315	315
Supply voltage	400 V, 3N, 50	400 V, 3N, 50
INCLUDED ACCESSORIES		
CONNECTION PLATE-HANDLING TO WT90/RT10	2	2

RACK TYPE DISHWASHERS
STANDARD NERT10 - HOT AIR BLOWER

- ◆ Maximum Operator Safety: the machine is completely automated and stops if the doors are accidentally or deliberately opened, there are no baskets in the machine, the wash pump malfunctions or the electric elements overheat.
- ◆ The NERT dishwashers are equipped with: a Hot Air Blower (600 mm in length, 1000 m³ h, 9 kW).

- ◆ NERT dishwashers can be equipped with: a Rinse Booster pump to increase rinse water pressure and Side Wash Arms, as well as a vast range of baskets 500 x 500 mm to suit any requirement.
- ◆ The NERT dishwashers can be connected to specific pre-wash tabling, entry and exit service tabling, roller conveyor tabling and conveyor belts.

- ◆ All models comply with the standards required by the main international approval bodies (VDE & DVGW) and are **CE** marked.

* Declared actual cycle duration times can extend when water supply temperature is lower than indicated

* Installation is recommended below a dishwashing hood to convey steam.

Installation diagram: P - Fumes outlet.



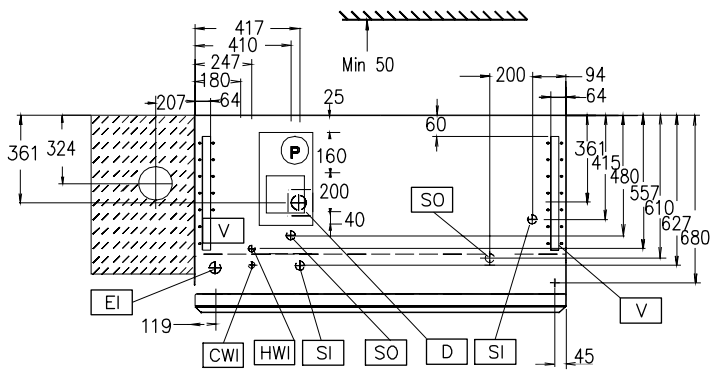
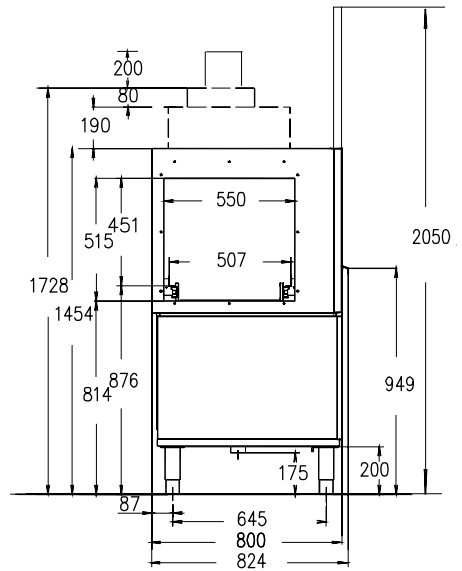
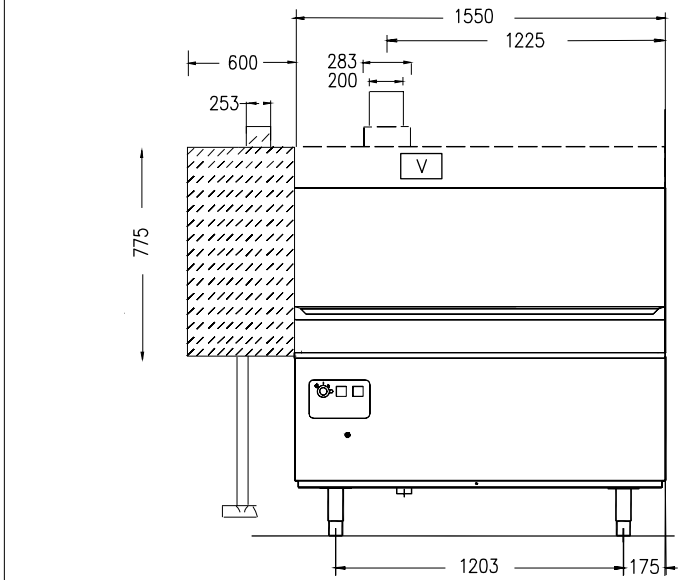
OPTIONAL ACCESSORIES		
ACCESSORIES	MODELS	
	NERT10ERB 533314	NERT10ELB 533315
BASKET FOR 5 HALF INSULATED TRAYS-RED	867005	867005
COVER GRID FOR SMALL/LIGHT ITEMS IN RACK	867016	867016
KIT 6 BASKETS FOR 1-TANK RACK TYPE DW	867050	867050
KIT 9 BASKETS FOR 1-TANK RACK TYPE DW	867051	867051
RINSE BOOSTER PUMP-ELECTR.MECH.RACK TYPE	864052	864052
SIDE PRE-WASH AND WASH ARMS	864053	864053



www.zanussiprofessional.com

RACK TYPE DISHWASHERS
STANDARD NERT10 - HOT AIR BLOWER

533314



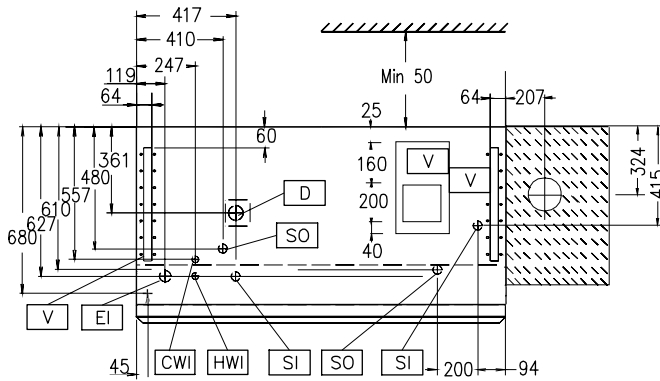
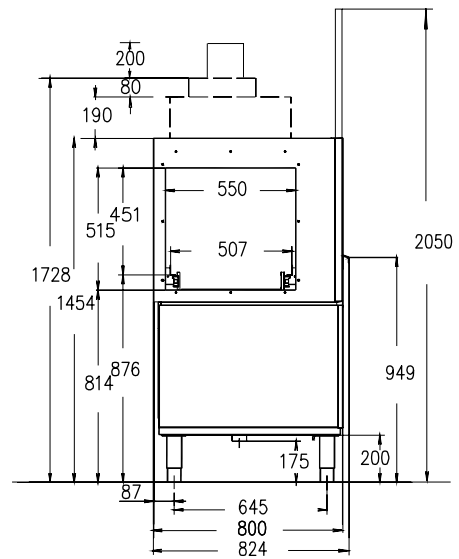
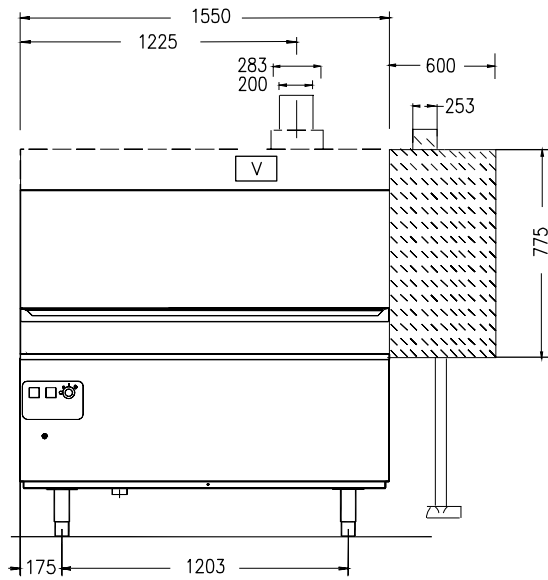
CG-1bDX00

LEGEND

	NERT10ERB 533314
CWI - Cold water inlet	G 3/4"
D - Water drain	50mm
EI - Electrical connection	400 V, 3N, 50
HWI - Hot water inlet	G 3/4"
V - Condensation outlet	●



www.zanussiprofessional.com



CG-1bSX00

LEGEND

	NERT10ELB 533315
CWI - Cold water inlet	G 3/4"
D - Water drain	50mm
EI - Electrical connection	400 V, 3N, 50
HWI - Hot water inlet	G 3/4"
V - Condensation outlet	●



www.zanussiprofessional.com