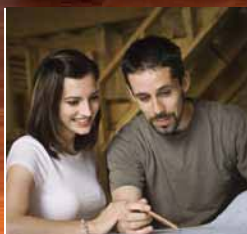


# **KLEEMANN**

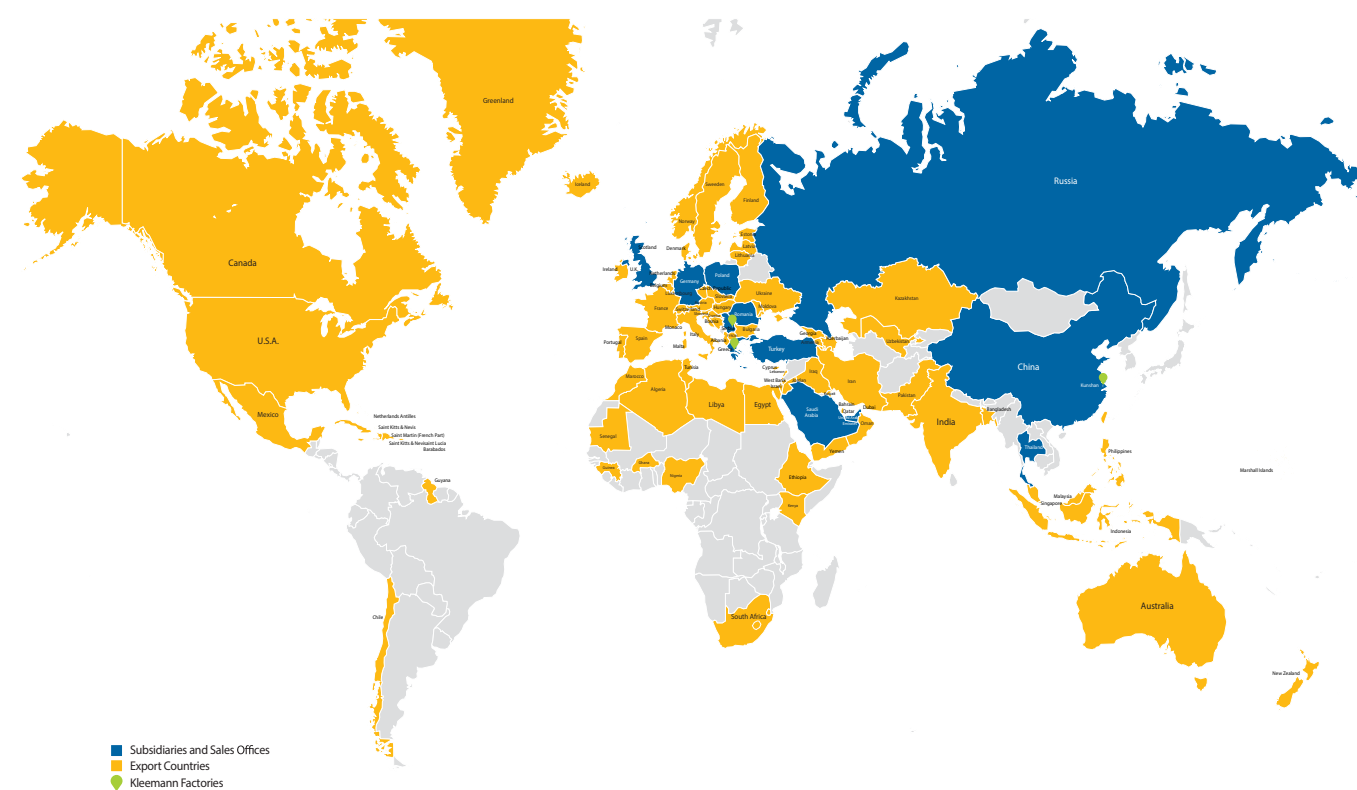
Maison Traction Lift



KLEEMANN is one of the major lift companies in the European and international markets. It began business in 1983 in Greece and today KLEEMANN, after 30 successful years in the fields of lift design and manufacturing, has sales to more than 90 countries worldwide.

Our vision is to be:

# Your 1st Choice in Lifts



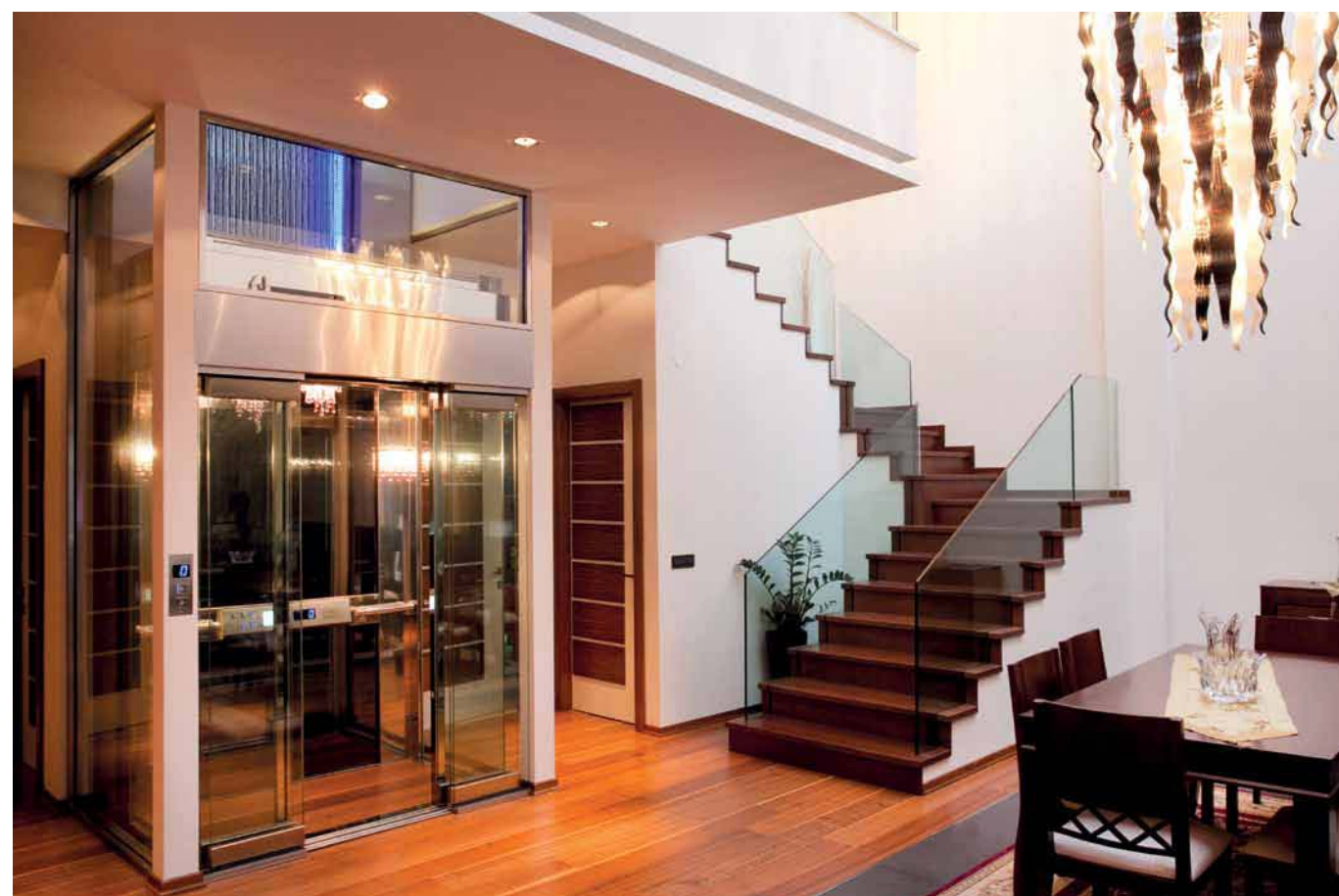
KLEEMANN PRODUCTION FACILITIES





# Feel Free

MaisonTraction Gearless is the ideal home lift solution for rated loads up to 450 kg. It is equipped with a premium quality gearless motor and a state of the art inverter which enables outstanding ride quality combined with noise elimination and low energy consumption. MaisonTraction is especially designed to achieve efficient use of space inside the shaft as well as ease of installation and maintenance.



# Feel Free of Trouble

## Safety

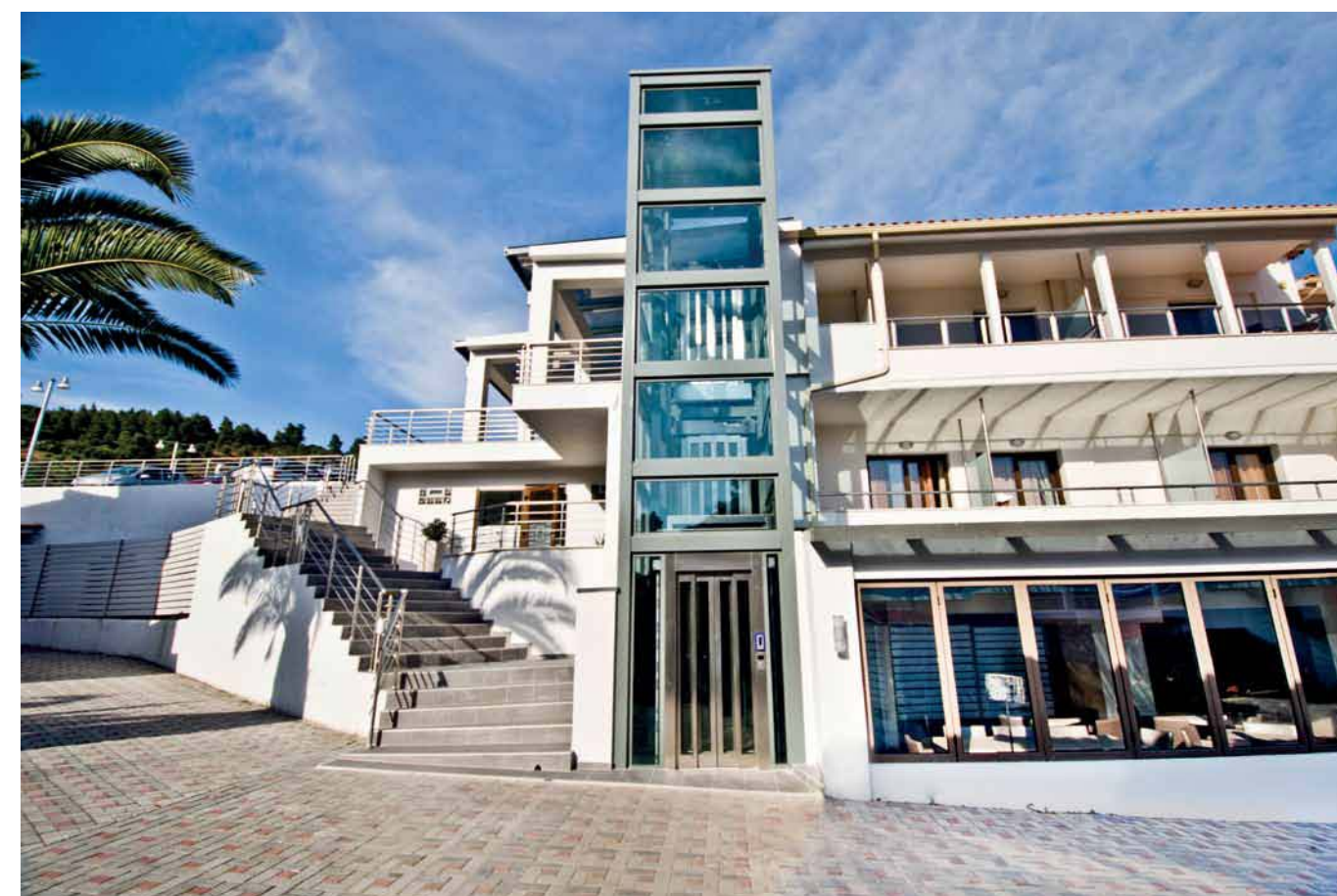
KLEEMANN's brand is closely interrelated with functionality and high safety level due to the state-of-the-art technology the company uses. Accordingly, MaisonTraction has all the necessary safety systems incorporated on it preventing in this way any unauthorized use. All KLEEMANN's products are in compliance with the European Directives. In particular, MaisonTraction is in compliance with EN 81.41.

## Reliability

MaisonTraction is equipped with all the necessary systems in order to cover all needs and offer reliability under all possible circumstances. Specifically, MaisonTraction is also equipped with a light indicator and an overload sensor which stops the lift's operation whenever the load is overweight.

## Reduce Costs

MaisonTraction uses a gearless motor which consists of a highly important factor for the energy consumption's reduction. Additionally, due to the nature of the motor, there no need for frequent maintenance.





# Feel Free to Fit

MaisonTraction is the most suitable solution for every building thanks to its versatility and flexibility. Even for special and challenging projects it allows installation according to the architectural needs. It is elegant and above all truly convenient allowing the perfect fitting in any new or existing building.



# Feel Free to Design

A wide variety of cabin interior materials, floors and ceilings are available to meet your aesthetic needs. KLEEMANN's special innovative design offers a unique experience of vertical transportation maximizing passenger satisfaction.

Wide range of finishing materials skinplates, wooden, stainless steel types.

A510 CH



Ceiling O14, polished oak veneer walls, stainless steel shadow gaps and skirtings, artificial granite creme floor, K2 handrail, 3/4 height / full width mirror, KCH car operating panel

L710 CH



Ceiling O14, stainless steel and wooden walls, stainless steel shadow gaps and skirtings, red rubber floor, K7 handrail, half height / full width mirror, KCH car operating panel

L310 CH



Ceiling O10, stainless steel walls, stainless steel skirtings, black rubber floor, K7 handrail, half height / full width mirror, KCH car operating panel

L320 CH



Ceiling O55, Skinplate walls, skinplate skirtings, grey rubber floor, K7 handrail, full height / 1/3 width mirror, KCH car operating panel



# Feel Free to Choose

## Automatic Doors



Stainless Steel Satin

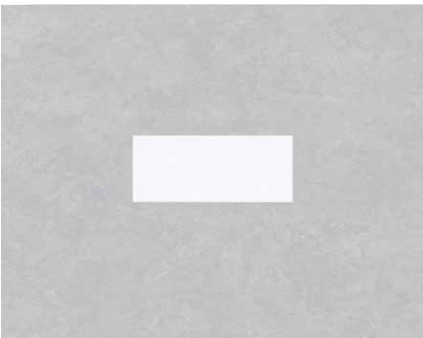


Full Glass



Big Vision

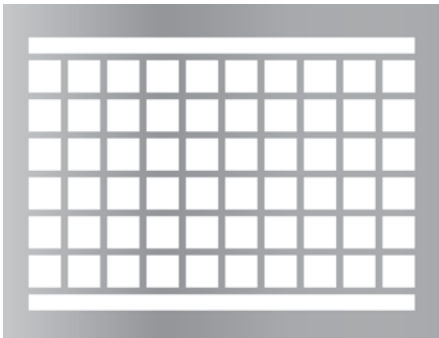
## Ceilings



Type: fluorescent tube lighting  
Stainless Steel



Type: fluorescent tube lighting  
Stainless steel and plexiglass



Type: fluorescent tube lighting  
Stainless Steel

## INTERIOR ELEMENTS

### Cabin and Landing Operating Panels

#### C.O.P.



- Type: KCH
- satin stainless steel
  - flat mounted
  - full height panel
  - dot matrix display
  - overload + buzzer
  - emergency remote alarm system
  - door open - door close (optional)

#### L.O.P.



- Type: LCH 001
- dot matrix display
  - one button



- Type: LCH 002
- dot matrix display
  - two buttons



- Type: LCH 003
- dot matrix display
  - two buttons
  - key switch

## Handrails

### Stainless Steel Mirror



Type: K7



Type: K2

## Floors

### Floor Laminate



FI 1



FI 2



FI 3



FI 4



FI 5

### Artificial Granites



Creme



White



Beige



Black

### Rubber Floors



Red



Grey



White

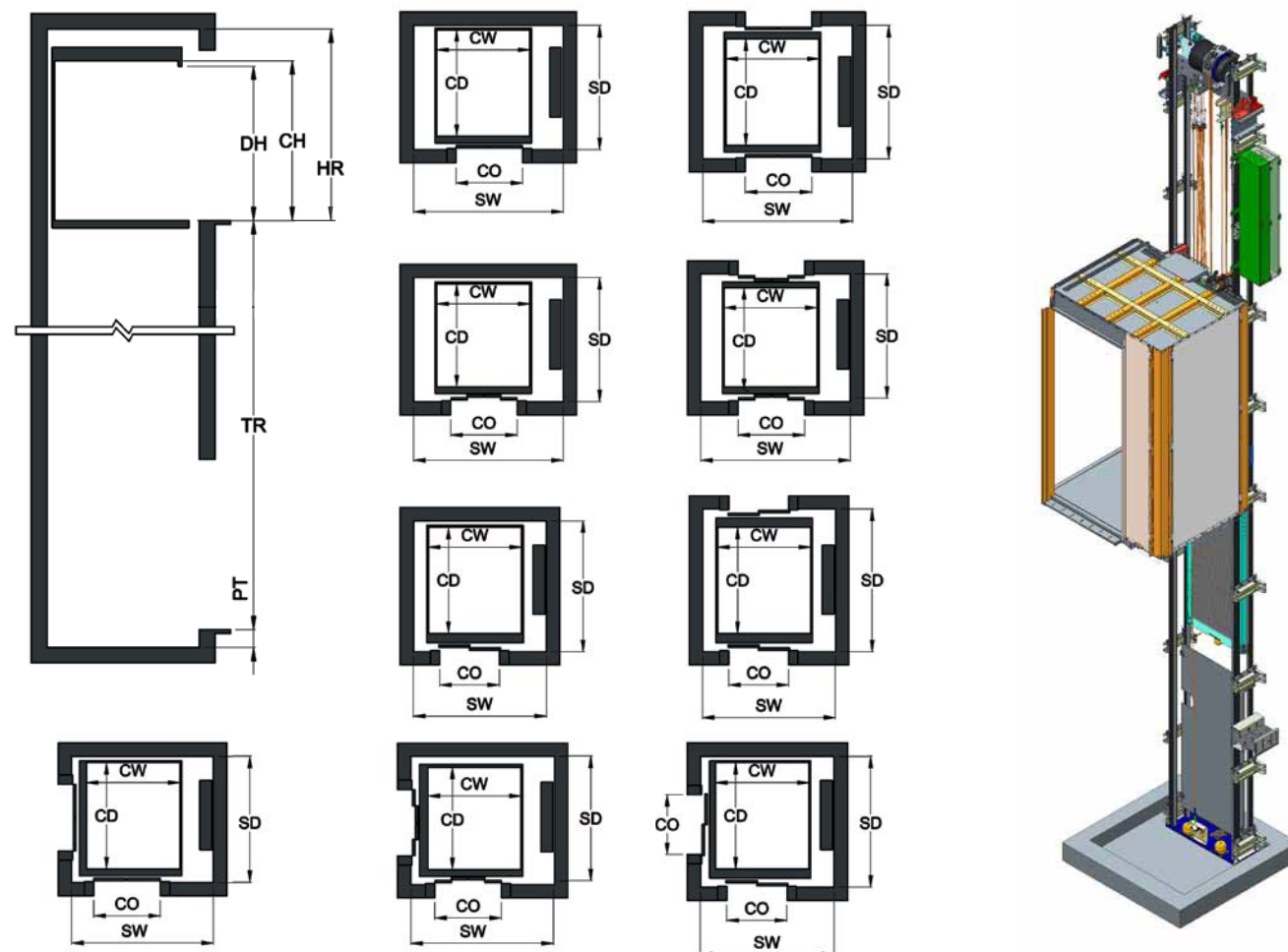


Black

# Technical Specifications

Type	Traction Lift MRL Gearless		Car height		external [mm]	Headroom (EN 81.41) [mm]
Rated Load (Kg)	320 Kg (4 persons)	450 Kg (6 persons)	internal [mm]	2100	2300	2700
Machine power (kW) *	0,8	1,1		2200	2400	2800
				2300	2500	2900
Max travel	15 m					
Max stops	6					
Roping	2:1					
Cabin speed (m/sec)	0,15 – 0,4					
Pit (EN 81.41)	400					

## Plan Views



### Shaft dimensions for central opening doors (2-panels)

Rated Load [kg]	Door Type	Clear door opening [mm]	Car width x depth [mm]	Nr of entrances	Shaft width [mm]	Shaft depth [mm]	
320	C2	800	1250 x 1000	1	1740	1615 R	
			1000 x 1250	1	1740	1550 S	
				2 through	-	-	
		900	1250 x 1000	1	1940	1615 R	
			1000 x 1250	1	1920	1550 S	
				2 through	-	-	
450			800	1400 x 1100	1	1740	1715 R
				1100 x 1400	1	1740	1700 S
					2 through	1740	1800 S
			900	1400 x 1100	1	1940	1610 R
				1100 x 1400	1	1940	1700 S
					2 through	1940	1800 S

### Shaft dimensions for central opening doors (4-panels)

Rated Load [kg]	Door Type	Clear door opening [mm]	Car width x depth [mm]	Nr of entrances	Shaft width [mm] 1	Shaft depth [mm]		
320	C4	800	1250 x 1000	1	1490	1685 R		
			1000 x 1250	1	1515	1620 S		
				2 through	1650	1790 S		
				2 adjacent	1685	1620 S		
		900	1250 x 1000	1	1490	1685 R		
			1000 x 1250	1	1500	1685 S		
				2 through	-	-		
				2 adjacent	1685	1775 S		
				450	800	1400 x 1100	1	1600
			1100 x 1400			1	1615	1770 S
2 through	1615	1940 S						
2 adjacent	1785	1770 S						
900	1400 x 1100	1	1600		1785 R			
	1100 x 1400	1	1630		1770 S			
		2 through	1630		1940 S			
		2 adjacent	1785		1770 S			

### Shaft dimensions for telescopic doors (2-panels)

Shaft dimensions for telescopic doors (2 panels)						
Rated Load [kg]	Car width x depth [mm]	Door Type	Clear door opening [mm]	Nr of entrances	Shaft width [mm] 1	Shaft depth [mm]
320	1250 x 1000	T2	800	1	1490	1685 R
	1			1515	1620 S	
	2 through*			1500	1850 S	
	2 adjacent			1685	1620 S	
	1250 x 1000		900	1	1580	1685 R
	1			1540	1620 S	
	2 through*			1550	1850 S	
	2 adjacent			1690	1810 S	
1000 x 1250	800		1	1600	1785 R	
1			1615	1770 S		
2 through			1615	1940 S		
2 adjacent			1785	1770 S		
450	1400 x 1100		900	1	1600	1785 R
	1			1615	1770 S	
	2 through			1615	1940 S	
	2 adjacent			1785	1770 S	
	1100 x 1400	1		1600	1785 R	
	1	1615		1770 S		
	2 through	1615		1940 S		
	2 adjacent	1785		1770 S		

Remark : (R) Machine on the rear

(S) Machine on the side



KLEEMANN Maison Traction

Greece	Head Offices-Export Sales Kilkis Industrial Area P.O. BOX 25, P.C. 61 100 Kilkis, Greece T: +30 23410 38100 F: +30 23410 38200 headoffice@kleemann.gr	Russia	KLEEMANN Russia Plekhanova Street, 4a P.C. 111123, Moscow, Russia T&F: +7499 9511 399 office@kleemannlifts.ru
Turkey	KLEEMANN Asansör Yukari Dudullu Türker Cad. No 42 34775 Ümraniye / Istanbul, Türkiye T: +90 216 4662267, F: +90 216 4662285 info@kleemannturk.com	Kingdom of Saudi Arabia	Sales Office KSA Eastern Ring Road-North Exit 12 P.O: 271320- RIYADH: 11352 Kingdom of Saudi Arabia T: +966 (0) 12455555 ksa@kleemannlifts.com
Serbia	KLEEMANN Liftovi Golubina ka b.b, imanovci Beograd, Serbia T: +381 22 409000, F: +381 22 409090 office@kleemann.rs	Germany	Sales Office Germany Kölner Strasse 15 D-45661 Recklinghausen T: +49 (0) 2361 3023415 F: +49 (0) 2361 3023482 office.germany@kleemannlifts.de
Romania	KLEEMANN Lift Ro Str. Filderman Wilhelm Nr. 4 Bis, 3 District Bucharest T: +40 314 228917, F: +40 314 228916 office@kleemannlifts.ro	United Arab Emirates	Sales Office UAE Sheikh Zayed Road P.O. Box 25, Dubai, UAE T: +971 4-3390000 F: +971 4-3395605 uae@kleemannlifts.com
United Kingdom	KLEEMANN Lifts UK Ltd Unit 8 Arena 14 Charbridge Lane, Bicester Oxfordshire, OX26 4ST T: +44 (0) 1869 327070 uk@kleemannlifts.com	Poland	Sales Office Poland Ul. PIOTRA SKARGI 4 Lokal 12 95-100 ZGIERZ Poland T: +48 42 2317 125 poland@kleemann.gr
China	KLEEMANN China Kunshan American Industrial Park No. 238 Chenfeng Road KSND, Kunshan, Jiangsu, China   215300 T: +86 0512 36823223 F: +86 0512 36823240 info@kleemannlifts.cn	Thailand	Bangkok Lift and Crane Co., Ltd. 269/22 Sathupradit Road, Chongnonsee, Yannawa, Bangkok 10120 Thailand T: +66 2211 7991 T: +66 2212 7638 F: +66 2674 1312 info@bangkoklift.com

Please visit us at  
[www.bangkoklift.com](http://www.bangkoklift.com)  
[www.bangkokhomelift.com](http://www.bangkokhomelift.com)





Bangkok Lift and Crane Co., Ltd.  
269/22 Sathupradit Road, Chongnonsee, Yannawa, Bangkok  
10120 Thailand  
T: +66 2211 7991  
T: +66 2212 7638  
F: +66 2674 1312  
info@bangkoklift.co.th  
Visit us at  
[www.bangkokhomelift.com](http://www.bangkokhomelift.com)  
[www.bangkoklift.co.th](http://www.bangkoklift.co.th)