



Atlas Basic SP / **Atlas** RL SP / **Atlas** Gigas SP
Residential, Commercial & Industrial





I N D E X

Atlas SP Residential, Commercial & Industrial	01
Uses & Features	02
Atlas Basic SP	04
Atlas RL SP	06
Atlas Gigas SP	08
Cabins	10
Door, Ceiling & Floor Guide	14
Operating Panel Guide	16
Green Features	18
Technical Specifications	20

ADVANTAGES

Outstanding ride quality

Atlas Basic SP, Atlas RL SP & Atlas Gigas SP were designed to ensure both high quality and ride comfort. The low levels of noise and car vibrations fulfil even the most strict requirements.

Safety

Feel safe with our solid products that guarantee maximum safety.

Ease of installation

Designed for ease of installation and use, providing spatial efficiency and reliability.

Eco-friendly

Regeneration systems are available to provide excellent ride quality while reducing energy up to 60%.

Design

Unique tailor made design options, customised according to your needs in order to perfectly fit in your space.

Fast delivery

Place your order and get your products in short delivery times.

Space efficiency

ATLAS Gigas SP was designed to give passengers more personal space. A larger car can be used for standard-sized shafts.

Atlas SP
RESIDENTIAL
COMMERCIAL
INDUSTRIAL

KLEEMANN **Atlas SP**

VERSATILITY OF USES

KLEEMANN uses its expertise and wide technical know-how to ensure high technology performance. It provides products for all types of passenger and freight lifts.

Insuperable design and unique solutions combined perfectly to meet your needs.



Shopping malls



Apartment buildings



Hotels

Warehouses



Uses & Features



Airports



Hospitals



Railway stations

02
03

KLEEMANN Atlas Basic SP / Atlas RL SP / Atlas Gigas SP

Atlas Basic SP

Atlas Basic SP is the ideal traction MRL solution for rated loads 375 - 1000 kg. It is equipped with KLEEMANN premium quality gearless motor and a state of the art inverter that enables outstanding ride quality, minimisation of sound levels and very low energy consumption. It features 2:1 suspension and speed up to 1,6 m/s. Especially designed to achieve reduced costs, Atlas Basic SP is a perfect value for money solution.

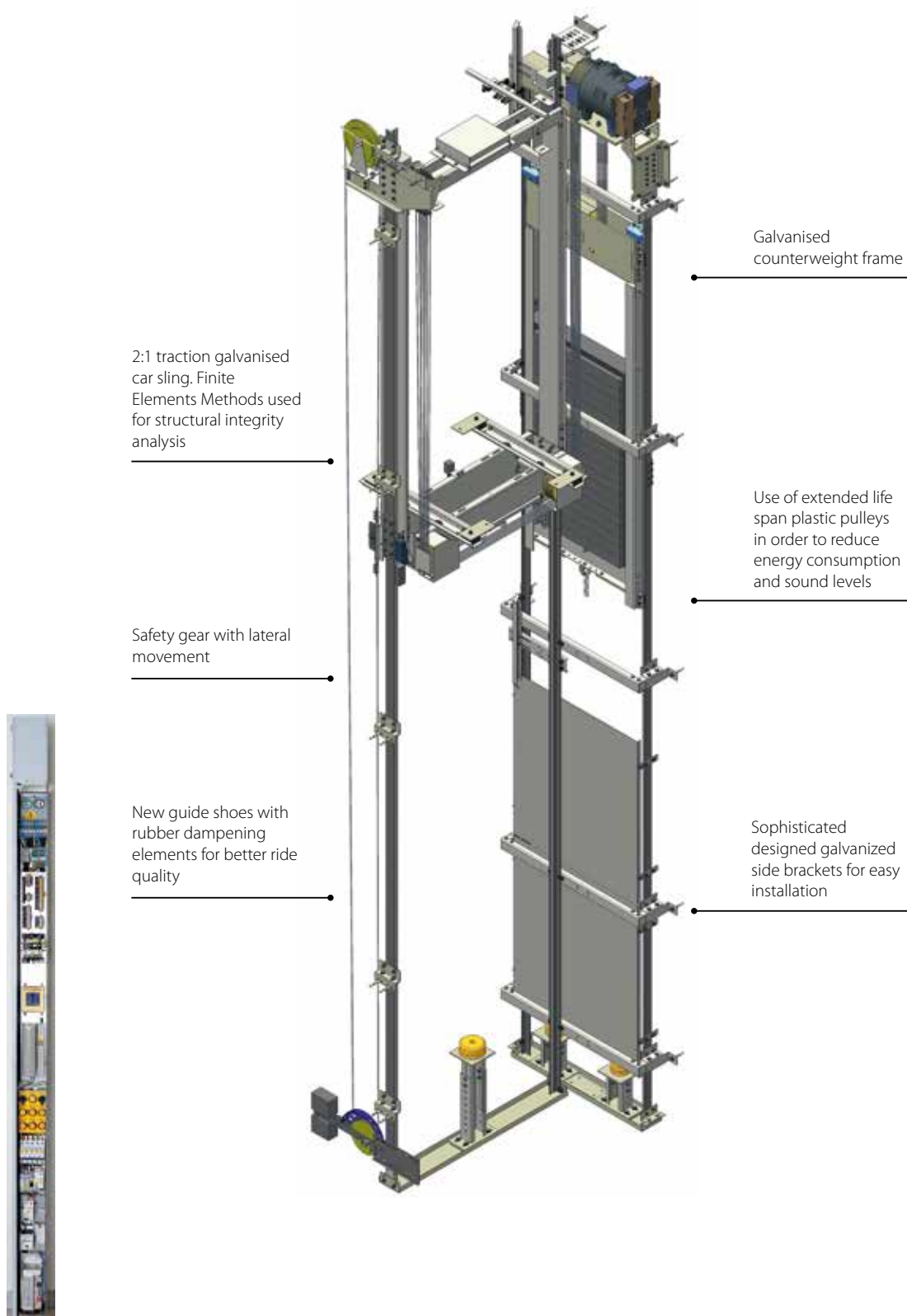


Atlas Basic SP is now also available with Machine Room (MR) option.

For more information contact KLEEMANN China at:
info@kleemannlifts.cn



TECHNICAL ADVANTAGES



Atlas RL SP

Atlas RL SP is the traction MRL solution for rated load up to 1000 Kg, max travel up to 80 meters and max speed up to 1,75m/s. It guarantees outstanding performance, exceptional ride quality and low energy consumption. Atlas RL SP is fully compliance with the Asian lift directives and standards.

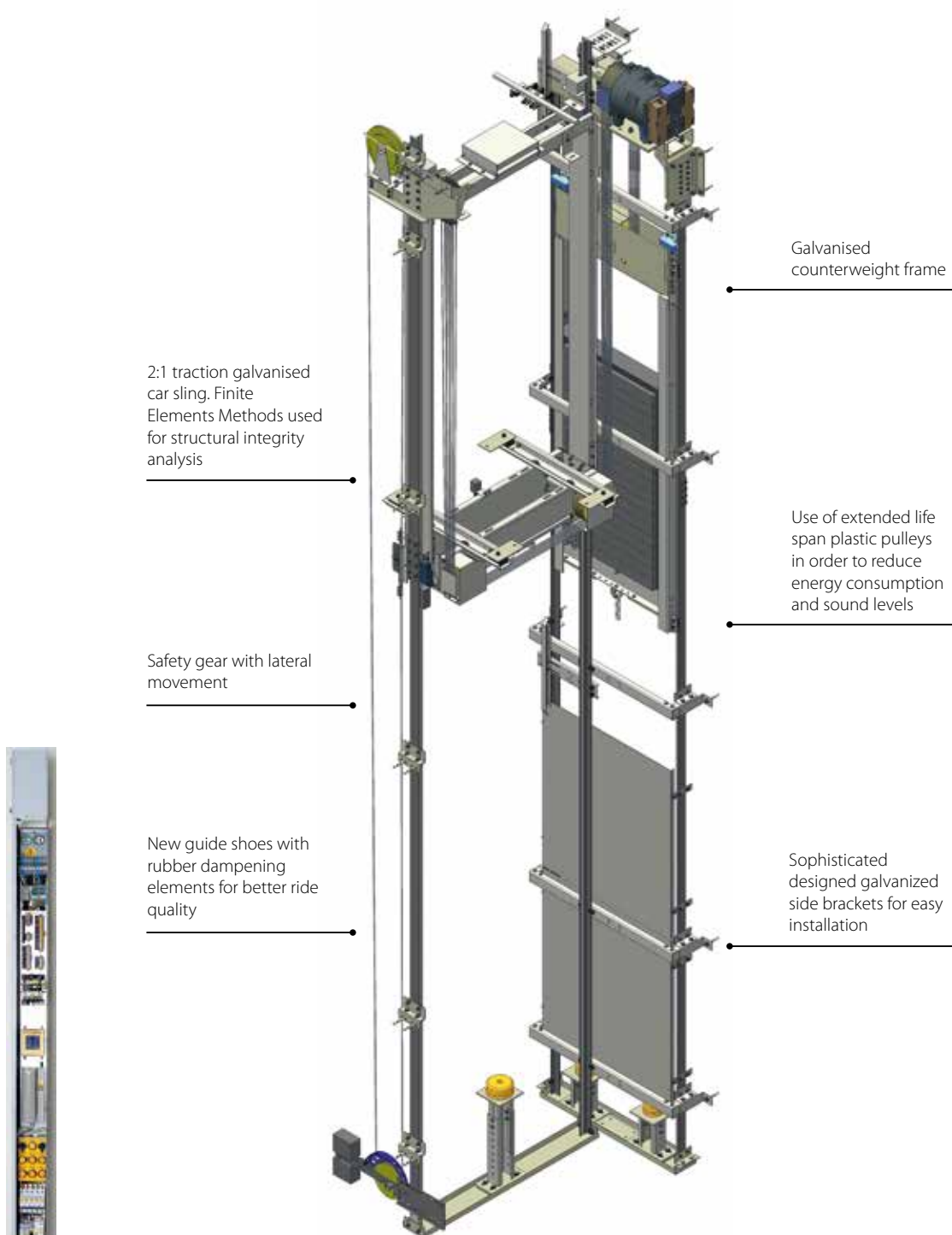


Atlas RL SP is now also available with Machine Room (MR) option.

For more information contact KLEEMANN China at: info@kleemannlifts.cn



TECHNICAL ADVANTAGES



Narrow controller suitable for installation within the door frame for space saving



Atlas Gigas SP

Atlas Gigas SP is the traction solution for rated loads from 1050Kg to 2500Kg adjusted to your needs.

It is equipped with KLEEMANN premium quality gearless motor and inverter of leading edge technology which enable exceptional ride quality, isolation of noises and very low energy consumption. Shape the product that best fits your needs through many design options and finishings.

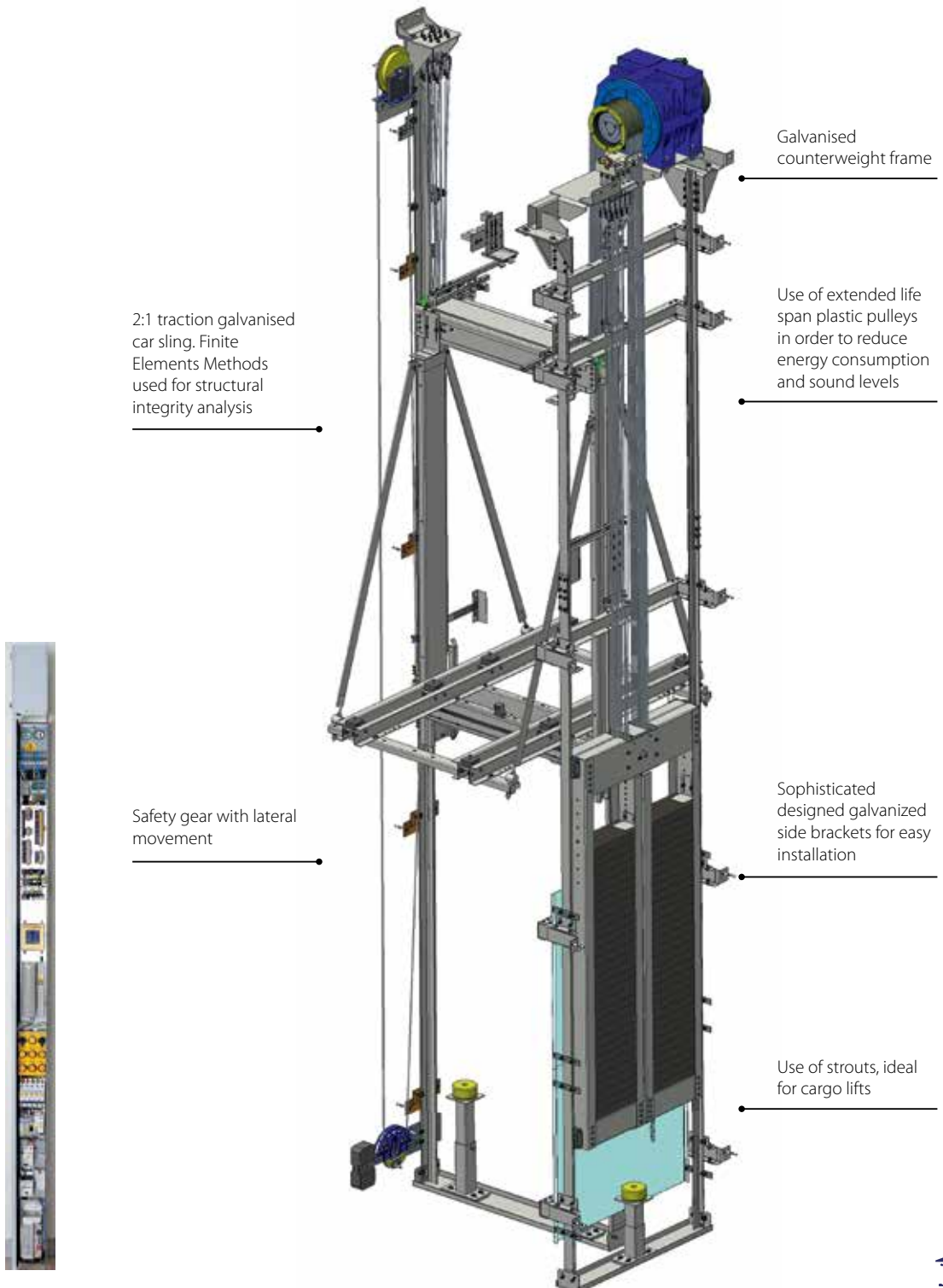


Atlas Gigas SP is now also available with Machine Room (MR) option.

For more information contact KLEEMANN China at:
info@kleemannlifts.cn



TECHNICAL ADVANTAGES



KLEEMANN **Atlas SP**

T120 /1 SP



Ceiling: Special ceiling T120
Walls: Special Melamine Panels 378
Corners: Stainless Steel Satin
Floor: Laminate 8630 Aspen Oak
Handrail: K2 Stainless Steel Mirror
Mirror: Full height/Full width
Car Operating Panel: KCH

T110 /3 SP



Ceiling: T110
Walls: Special Melamine Panels 402
Corners: Stainless Steel Satin
Floor: Artificial Granite White
Handrail: K2 Stainless Steel Mirror
Mirror: Full height/Full width
Car Operating Panel: KCH

T 110 SP



Ceiling: T110

Walls: Special Melamine Panels 147 (blue)

Corners: Stainless Steel Satin

Floor: Laminate 8630 Aspen Oak

Handrail: K2

Mirror: Full height/Full width

Car Operating Panel: KCH

A 530 SP



Ceiling: O3 with Milky Plexiglass

Walls: m.1785 Split Panel

Corners: Stainless Steel Skirtings

Floor: Ceramic Tile

Handrail: K7

Mirror: Full height/Full width

Car Operating Panel: KCH

KLEEMANN **Atlas SP**

L 530 SP



Ceiling: 014

Walls: Stainless Steel

Corners: Stainless Steel Skirtings

Floor: FI2

Handrail: K7

Mirror: Half height/Full width

Car Operating Panel: KCH

L710 /2 SP



Ceiling: O3 with Milky Plexiglass
Stainless Steel Gold Mirror

Walls: Combination of Stainless Steel
Gold Mirror and Wooden Veneer VC 1182

Corners: Inward Curves, Shadow Gaps
and Skirtings Stainless Steel Gold Mirror

Floor: Artificial Granite Regal Beige

Handrail: 105 Stainless Steel Gold

Mirror: Half height/Full width

Car Operating Panel: KCH

A 510 SP



Ceiling: 014

Walls: Polished Oak Veneer

Corners: Stainless Steel Shadow
Gaps and Skirtings

Floor: Artificial Granite Creme

Handrail: K2

Mirror: 3/4 height/Full width

Car Operating Panel: KCH

A 520 SP



Ceiling: O3 with Milky Plexiglass

Walls: Artificial Leather 7004

Corners: Stainless Steel Skirtings

Floor: Ceramic Tile

Handrail: K7

Mirror: Full height/Full width

Car Operating Panel: KCH



The Blue Line Concept

A constitutional element of "**KLEEMANN Design**" is the "**Blue Line Concept**".

Blue is the colour of tranquility and communication.
Line means simplicity and is the easiest way to consolidate two points.

The "**Blue Line Concept**" forms the union between you and the calmness and safety of your ride.

It welcomes you in peace and it moves you, moving all your senses at the same time.

The Blue line will guide you, the attractive design of the doors will welcome you and up close you can touch and feel everything. When you enter, you can live in full, the unique space we created in the lift cabin.

Automatic Doors

Full Glass



Big Vision



Stainless Steel Satin



14
15

KLEEMANN Atlas Basic SP / Atlas RL SP / Atlas Gigas SP

Car Operating Panels



Type: KCH
• Gold satin stainless steel
• Flush mounted



Type: KCH LCD
• Blue Line
• Satin stainless steel
• Flush mounted



Type: KCH TFT
• Blue Line
• Satin stainless steel
• Flush mounted



Type: KCH C300
• Blue Line
• Satin stainless steel
• Flush mounted

Landing Operating Panels



Type: LCH 002
 • Flush mounted
 • Two buttons
 (default option)



Type: LCH LCD 002
 • Blue Line
 • Flush mounted
 • Two buttons



Type: LCH TFT 002
 • Blue Line
 • Flush mounted
 • Two buttons



Type: LCH C302
 • Blue Line
 • Flush mounted
 • Two buttons



Type: LCH C342
 • Blue Line
 • Flush mounted
 • Two buttons

Indicators



Type: LCHL TFT
 • Flush mounted
 • TFT display



Type: LCHL LCD
 • Flush mounted
 • LCD display



Type: LCHL C300
 • Flush mounted
 • LCD display

Firemen Switch



Firemen Switch FS C300

Ceilings



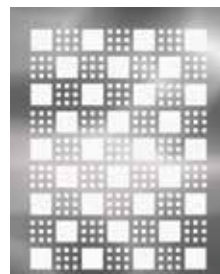
03



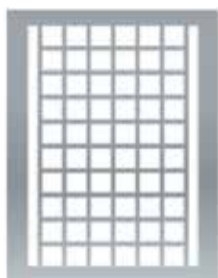
07



010



013



014



015



055



T120

Handrails



K2



K7

KLEEMANN also offers you the opportunity to supply your own floor and wall finishes in case you need something else than our variety of materials. Please contact us for more options.

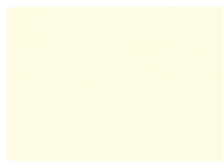
Please note that images and colour representation may differ slightly from reality.
Materials are subject to change without prior notice.

Walls

Skinplates



DL 86



A90 GTA



PPS 13



PPS 93



B13

Artificial Leather



Pelle Sintetica S-4605



Madeira 4411



Saronno S-7015



Saronno S-7005



Pelle Sintetica S-4604

Special Melamine Panels



144 SP



145 SP



147 SP



A 402 SP



A 378 SP

Floors

Rubber



2102T



2020T



2050T



2101T



2102T

Artificial Granites



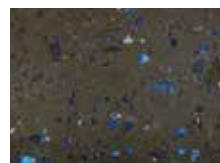
Regal White SP



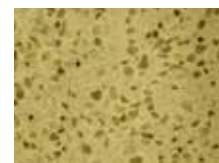
Regal Red SP



Regal Grey SP



Regal Black SP



Regal Beige SP

Floor Laminate



8766



8096



8459



1675



720



DESTINATION CONTROL

The destination control increases the efficiency of the lift application and reduces the waiting time.

The passengers enter their destination in the panel, which responds by indicating the lift that is going to be used.

There are two options available according to the traffic analysis of the building.

- **Buildings with high traffic density on the ground floor**

The touch panel PC's are installed only at the ground floor while at the other floors conventional operating panels are used.

The number of the touch panels to be installed depends on the number of lifts.

- **Buildings with high traffic density between multiple floors**

The touch panels PC's are installed at each floor.

The destination information from the touch panel PC's are sent to a central processor that communicates with each lift controller to distribute in the most effective way the landing calls.



Advantages

- Controlled travel of the lifts
- Reduced travel time via carefully targeted distribution of the passengers
- Reduced waiting time
- A more efficient utilisation of the individual lifts in comparison to conventional controls
- Modern and future-oriented

GREEN FEATURES

The green solution provides excellent ride quality, while reducing up to 60% energy consumption.



Regeneration Drive

The regeneration unit has been developed in order to recover excess energy from the lift when the empty car travels upwards or the fully loaded car travels downwards, the recovered energy is used again during the operation of the lift.

KLEEMANN regeneration unit produces clean energy which does not cause any malfunction to the network..

Stand By Mode

With the Stand By Mode, when the lift is not in use, you save energy for the electronic subsystems.



Energy Efficiency

Thanks to the energy reduction features Atlas SP reaches A-class for low energy consumption according to VDI 4707-1.



x 20

**TIMES
LONGER**

Led Lighting

Led Lighting assures less energy consumption and it lasts 20 times longer comparing to standard lighting.

KLEEMANN Atlas SP

Atlas SP

SINGLE ENTRANCE	Rated Load (Kg)	400 5 persons		450 6 persons		630 8 persons		800 10 persons		
	Car Dimensions (mm) CWxCD	900x1200		1000x1250		1100x1400		1350x1400		1100x2100
	Door Type*	C2	T2	T2	T2	T2	T2	T2	T2	
	Door CO (mm)	700	800	800	800	900	900	900	900	1000
	Shaft Dimensions (mm)SWxSD	1600x1500	1550x1580	1600x1630	1700x1780	1700x1780	1950x1780	1650x2480	1850x2480	
THROUGH-TYPE CAR	Rated Load (Kg)	400 5 persons		450 6 persons		630 8 persons		800 10 persons		
	Car Dimensions (mm) CWxCD	900x1200		1000x1250		1100x1400		1350x1400		1100x2100
	Door Type*	C2	T2	T2	T2	T2	T2	T2	T2	
	Door CO (mm)	700	800	800	800	900	900	900	900	1000
	Shaft Dimensions (mm)SWxSD	1600x1610	1550x1750	1600x1800	1700x1950	1700x1950	1950x1950	1650x2650	1850x2650	

* C2 = 2-panel central opening, T2 = 2-panel telescopic opening

Atlas RL SP

SINGLE ENTRANCE	Rated Load (Kg)	375 5 persons		450 6 persons		630 8 persons		800 10 persons		
	Car Dimensions (mm) CWxCD	900x1200		1000x1250		1100x1400		1350x1400		1100x2100
	Door Type*	C2	T2 ¹	T2 ¹	T2 ¹	T2 ¹	T2 ¹	T2 ¹	T2	
	Door CO (mm)	700	800	800	800	900	900	900	900	1000
	Shaft Dimensions (mm)SWxSD	1600x1500	1550x1580	1650x1630	1750x1780	1750x1780	2000x1780	1700x2480	1750x2480	
THROUGH-TYPE CAR	Rated Load (Kg)	400 5 persons		450 6 persons		630 8 persons		800 10 persons		
	Car Dimensions (mm) CWxCD	900x1200		1000x1250		1100x1400		1350x1400		1100x2100
	Door Type*	C2	T2 ¹	T2 ¹	T2 ¹	T2 ¹	T2 ¹	T2 ¹	T2	
	Door CO (mm)	700	800	800	800	900	900	900	900	1000
	Shaft Dimensions (mm)SWxSD	1600x1610	1550x1750	1650x1800	1750x1950	1750x1950	2000x1950	1700x2650	1750x2650	

* C2 = 2-panel central opening, T2 = 2-panel telescopic opening, 1 = For surface mount COP, shaft width can be reduced by 50mm

Atlas Gigas SP

SINGLE ENTRANCE	Rated Load (Kg)	1275 17 persons		1600 21 persons		1800 24 persons		2000 26 persons		2500 26 persons	
	Car Dimensions (mm) CWxCD	1200x2300		1400x2400		1600x2350		1500x2700		1800x2700	
	Door Type*	T2	C2	T2	C2	T2	C2	T2	C2	T2	C2
	Door CO (mm)	1000		1200		1200		1200		1400	
	Shaft Dimensions (mm)SWxSD	1900x2675	2200x2675	2100x2775	2600x2775	2300x2725	2600x2775	2200x3075	2600x2775	2500x3075	3000x3075
THROUGH-TYPE CAR	Rated Load (Kg)	1275 17 persons		1600 21 persons		1800 24 persons		2000 26 persons		2500 26 persons	
	Car Dimensions (mm) CWxCD	1200x2300		1400x2400		1600x2350		1500x2700		1800x2700	
	Door Type*	T2	C2	T2	C2	T2	C2	T2	C2	T2	C2
	Door CO (mm)	1000		1200		1200		1200		1400	
	Shaft Dimensions (mm)SWxSD	1900x2850	2200x2850	2100x2950	2600x2950	2300x2900	2600x2900	2200x3250	2600x3250	2500x3250	3000x3250

* C2 = 2-panel central opening, T2 = 2-panel telescopic opening



Technical specifications

1000 13 persons		
2100x1100		1400x1600
C2		T2
1000	1200	1000
2700x1400	2700x1400	2000x1950

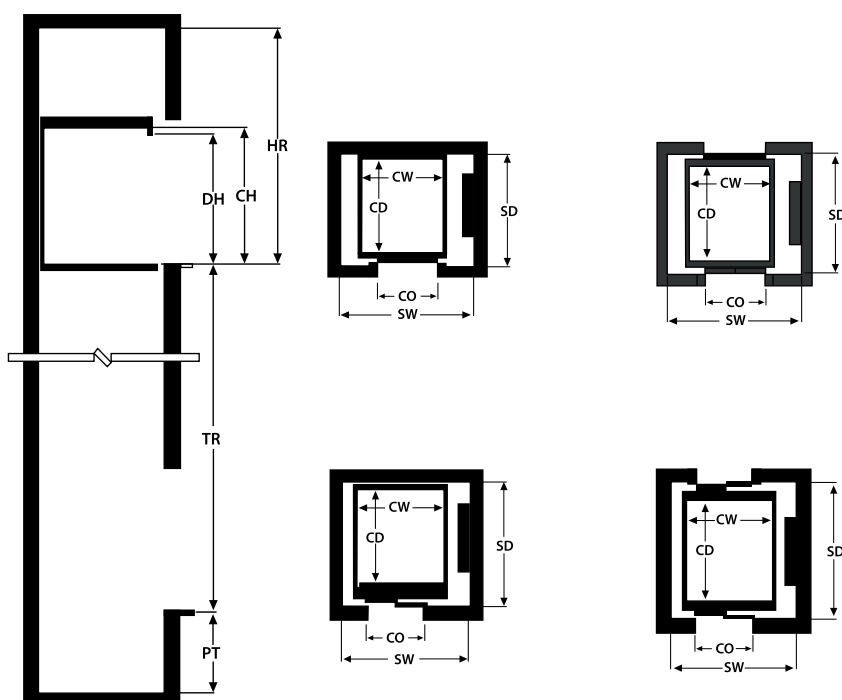
1000 13 persons		
2100x1100		1400x1600
C2		T2
1000	1200	1000
2700x1510	2700x1510	2000x2150

1000 13 persons		
2100x1100		1400x1600
C2 ¹		T2 ¹
1000	1200	1000
2750x1450	2750x1450	2050x1980

1000 13 persons		
2100x1100		1400x1600
C2 ¹		T2 ¹
1000	1200	1000
2750x1510	2800x1510	2050x2150

	Atlas Basic SP	Atlas RL SP	Atlas Gigas SP
Rated Load (Kg)	375-1000	375-1000	1050-2500
Suspension	2:1	2:1	2:1
Machine Room	MRL (MR)	MRL (MR)	MRL (MR)
Max Travel (m)	45	80	80
Max Rated Speed (m/s)	1,6	1,75	1,75
Pit Depth (mm)	v≤1.0 m/s 1100 v=1.6 m/s 1250	v≤1.0 m/s 1150 v=1.75 m/s 1300	v≤1.0 m/s 1100 v=1.75 m/s 1315
Clear Headroom (mm)	v≤1.0 m/s 3400* v=1.6 m/s 3600*	v≤1.0 m/s 3400* v=1.75 m/s 3650*	3515mm (v=1.0 m/s, Q ≤1600kg)* 3630mm (v=1.0 m/s, Q >1600kg)* 3695mm (v=1.75 m/s, Q ≤1600kg)* 3810mm (v=1.75 m/s, Q >1600kg)*
Entrances	Single entrance or through type car	Single entrance or through type car	Single entrance or through type car
Machine	KLEEMANN RN	KLEEMANN RN	KLEEMANN RN
Controller	KLEEMANN CH1000	KLEEMANN CH1000	KLEEMANN CH1000
Panoramic Lift	Yes	Yes	Yes

* For internal car height 2100mm



For the full range of your options, you are kindly advised to check your KLEEMANN Cabins brochure, visit www.designyourlift.com or contact your sales engineer.
For special requests contact For more information contact KLEEMANN China at: info@kleemannlifts.cn

Greece **Head Offices - Export Sales**
Kilkis Industrial Area
P.O. BOX 25, P.C. 61 100 Kilkis, Greece
T: +30 23410 38100
F: +30 23410 38200
headoffice@kleemann.gr

Turkey **KLEEMANN Asansör**
Orta Mahallesi Mesudiye Sokak
(Sabancı Üniversitesi yanı) No: 8
Orhanlı 34956 Tuzla / İstanbul Türkiye
T: +90 216 570 05 00
F: +90 216 570 05 09
info@kleemannturk.com

Serbia **KLEEMANN Liftovi**
Golubinačka b.b, Šimanovci
Beograd, Serbia,
T: +381 22 409000
F: +381 22 409090
office@kleemann.rs

Romania **KLEEMANN Lift Ro**
Str. Filderman Wilhelm Nr. 4 Bis,
3 District Bucharest
T: +40 314 228917
F: +40 314 228916
office@kleemannlifts.ro

UK **KLEEMANN Lifts UK Ltd**
Unit 8 Arena 14,
Charbridge Lane, Bicester
Oxfordshire, OX26 4ST
T: +44 (0) 1869 327070
uk@kleemannlifts.com

China **KLEEMANN China**
Kunshan American Industrial Park
No. 238 Chenfeng Road
KSND, Kunshan, Jiangsu, China | 215300
T: +86 0512 36823223
F: +86 0512 36823240
info@kleemannlifts.cn

Russia **KLEEMANN Russia**
Energetikov str., 20, Dzerzhinsky,
Moscow oblast
Russian Federation, 140091
T&F: +7499 9511 399, +7 495 283 00 01
office@kleemannlifts.ru

Croatia **KLEEMANN Dizala**
Radnička cesta 47, 10000 Zagreb
PC Romeo i Julija, 7th floor
T: +385 1 5515 774
F: +385 1 562 5871
info@kleemannlifts.hr

Australia **KLEEMANN Australia**
Sydney Office Unit 1A, 2-6 Orion Road LANE
COVE WEST NSW 2066
TEL: + 02 9907 2066
info@kleemannlifts.com.au

Germany **KLEEMANN Aufzüge GmbH**
Adolf-Dembach-Str. 22A
47829 Krefeld, Deutschland
T: +49 (0) 2151-4189 - 0
info@kleemann-aufzuege.de

United Arab Emirates **Sales Office UAE**
uae@kleemannlifts.com

Poland **Sales Office Poland**
ul.Serwituty 23, L-1.11
02-233 Warszawa, Poland
T: +48 22 343 94 94
poland@kleemannlifts.pl

Kingdom of Saudi Arabia **Sales Office KSA**
P.O Box 8583 Jeddah 21492,
Saudi Arabia
T: +966 531390940
ksa@kleemannlifts.com

The Republic of Azerbaijan **Sales Office Baku**
Khatai district street Suleiman Vezirova house
22, block 2 Baku
T: +994124642023
baku@kleemannlifts.com

France **Sales Office Paris**
La Grande Arche-Paroi Nord
92044 Paris La Defense
T: +33 642975490
france@kleemannlifts.com

Thailand **Sales Office Bangkok**
269/22 Sathupradit Road, Chongnonsee,
Yannawa, Bangkok 10120
Thailand
T: +66 2211 7991
T: +66 2212 7638
F: +66 2674 1312
info@bangkoklift.co.th

Please visit us at

www.bangkoklift.com
www.bangkokhomelift.com

