

Advancing Cancer Diagnostics  
Improving Lives



# BOND-III

FULLY AUTOMATED IHC/ISH STAINER



MAKE A DIFFERENCE

## MAKE A DIFFERENCE TO ACCURACY AND TIMELINESS

**Pathologists need the complete case to provide patients with an accurate diagnosis.**

BOND-III processes protocol steps simultaneously. This allows a single BOND-III to complete five cases (30 slides) in 2.5 Hours. For labs with multiple instruments, speeds can be even faster.

Exceed your pathologist's TAT expectations for complete case delivery.

HEMATOPATHOLOGY PANELS				
Ave. TAT	Panel A 2:33:06	Panel B 2:36:07	Panel C 2:28:39	Panel D 2:28:39
	BCL2	BCL2	BCL2	BCL2
	BCL6	BCL6	CD3	BCL6
	CD3	CD3	CD5	CD3
	CD5	CD5	CD10	CD10
	CD10	CD10	CD20	CD20
	CD20	CD20	CD21	CD45
	CD21	CD21	CD23	Ki67
	CD23	CD23	Cyclin D1	TdT
	Cyclin D1	Cyclin D1	Kappa	
	Kappa	Ki67	Lambda	
	Lambda			

*NCCN Clinical Practice Guidelines in Oncology (NCCN Guidelines®)  
Non-Hodgkin's Lymphomas, Version 4.2014.*



**DELIVER THE LAST SLIDE WITH THE FIRST... BECAUSE IT'S THE COMPLETE CASE THAT MATTERS**

## MAKE A DIFFERENCE TO LABORATORY MANAGEMENT

**Put every inch of space to work. BOND-III's small footprint increases the value of your laboratory.**

Meet the demands of ever-increasing slide volumes with the space you have. BOND-III is not only the smallest free-standing IHC/ISH stainer, it also produces the most amount of slides per square meter.

With BOND-III, you can make every inch of your lab count.



**360 slides per day**



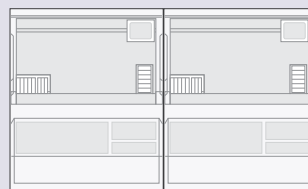
**146 slides m<sup>2</sup>/day**



**270 slides per day**



**96 slides m<sup>2</sup>/day**



**210 slides per day**



**91 slides m<sup>2</sup>/day**

*All instruments drawn to 1:63 scale from published data.*



# MAKE A DIFFERENCE TO TEAM PRODUCTIVITY

**BOND-III helps create high performance teams as its optimized user experience makes common tasks fast and efficient.**



AN INTERFACE DESIGNED WITH THE USER IN MIND

## YOUR WORKFLOW, YOUR WAY

- » Independent trays allow flexible case management.
- » Run continuously with random reagent access. Load antibodies and detection systems whenever you need them.

**93%** of labs say BOND is the most reliable.\*

## NO SURPRISES

Withstand the volumes of the busiest labs – confidently approach each day with BOND-III's unmatched reliability.

## ILLUMINATE YOUR NEXT STEP

Ascertain bulk reagent levels and status changes at a glance with BOND-III's unique active lighting system.

- » Fill bottles anytime.
- » Visual alerts when bottles need attention.



\* According to customers in an independent survey

# VISION 24

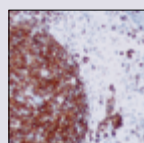


## MAKE A DIFFERENCE BY ELEVATING LABORATORY STANDARDS

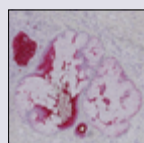
BOND is a complete IHC and ISH system that helps you set new standards in laboratory practice.

### HIGH QUALITY STAINING

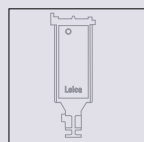
We provide clarity so you can provide the answers.



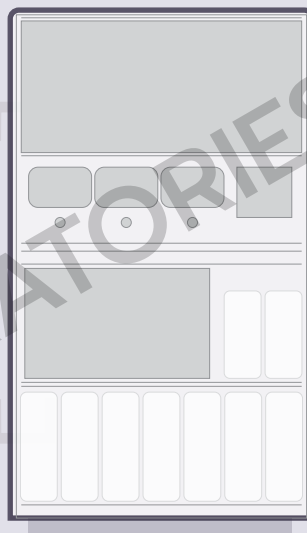
» **READY-TO-USE REAGENTS**  
The Novocastra HD BOND RTU range, utilizing BOND Compact Polymer Detection, uniquely provides independently benchmarked clones that pathologists can trust.



» **DETECTION**  
BOND Compact Polymer Detection technology provides highly sensitive staining for both mouse and rabbit antibodies. It also performs across CISH and IHC techniques.



» **BOND UNIVERSAL COVERTILE**  
Ensures consistent staining and preserves the morphology of precious patient samples. Produces very low waste volumes thereby minimizing waste handling and disposal costs.



### WORKFLOW SOLUTIONS

Connect to a future of possibilities.

» **BOND LIS-ip**  
Lets BOND receive test requests from your LIS and eliminates redundant data entry.

» **BOND-ADVANCE NETWORK**  
Grow your lab the smart way. Connect and manage up to 30 BOND's on one network as well as all reagents and consumables.

» **APiQ**  
Work Smart.  
- Instrument Dashboard - stay in control with instrument status on your mobile device.  
- Inventory Manager - optimize your inventory.

» **CEREBRO**  
Improve patient safety, productivity and lab customization in your lab with CEREBRO sample tracking and workflow management.

*Not all products are available in all regions*

### BOND-III SPECIFICATIONS

Dimensions	790 mm (W) x 1378 mm (H) x 806mm (D) 31.1 in (W) x 54.2 in (H) x 31.7 in (D)
Weight (dry)	238 kg (525 lb.)
Slide capacity	30
Reagent container capacity	7 mL, 30 mL and Titration Containers
Number of reagent spaces	36
Bulk reagent container capacity	2 L or 5 L
Hazardous waste container capacity	5 L
Standard bulk waste container capacity	2 x 5 L
Power consumption	1200 VA

### LEICA BIOSYSTEMS

Leica Biosystems is a global leader in workflow solutions and automation, striving to advance cancer diagnostics to improve patients' lives. Leica Biosystems provides anatomic pathology laboratories and researchers a comprehensive product range for each step in the pathology process, from sample preparation and staining to imaging and reporting. Leica Biosystems' easy-to-use and consistently reliable offerings help improve workflow efficiency and diagnostic confidence. The company is represented in over 100 countries and is headquartered in Nussloch, Germany.

Leica Biosystems – an international company with a strong network of worldwide customer services.

For detailed contact information on your nearest sales office or distributor please visit our website: [LeicaBiosystems.com](http://LeicaBiosystems.com)