

The Pathology Company

**Leica**  
BIOSYSTEMS



# BOND-III

Speed. Quality. Efficiency.

# Speed

Provide answers sooner



**REDUCE TIME TO DIAGNOSIS**

- » Faster turnaround  
Labs achieving **24 hour TAT** for full case loads<sup>1</sup>

**MORE SLIDES PER DAY**

- » Better use of time  
**2.5 hours/slide** (typical)  
With full 30-slide load

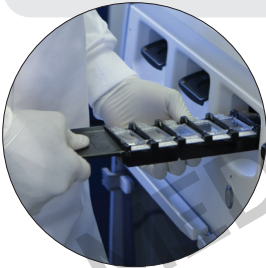
**MORE SLIDES, LESS SPACE**

- » Small footprint

**0.6m<sup>2</sup>**

**MEET DAILY DEMANDS**

- » Independent trays allow flexible case management



**EASY INSTRUMENT MANAGEMENT**

- » Fill bulks anytime – even mid-run

SUPERIOR RELIABILITY

**93%**

SAY BOND IS THE MOST RELIABLE<sup>5</sup>



**94%**  
SAY BOND-III IS THE FASTEST<sup>5</sup>

**RESPOND QUICKLY**

- » Load or unload markers during runs



**GLANCE AND GO**

- » Save time by visually checking bulk volumes

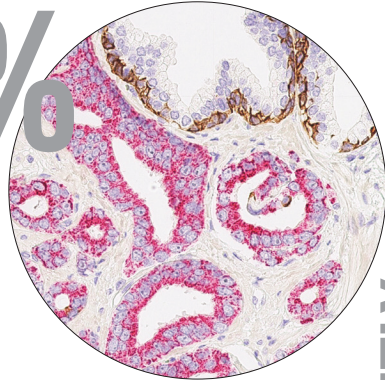
# Quality

Increase diagnostic confidence

CYTOKERATIN 5

97%

SENSITIVITY<sup>2</sup>



INDEPENDENTLY  
ASSESSED QUALITY<sup>3</sup>

## NOVOCASTRA™ HD REAGENTS

- » Independently verified
- » Highly Definitive antibodies
- » BOND ready-to-use formats



## TOTAL TISSUE CARE

- » Gentle reagent application
  - Excellent tissue retention
  - Preserved morphology
- » Controlled incubation
  - Tissue stays hydrated
  - Consistent quality

## UNIQUE COVERTILE™

“BOND kept all the sections on the slides – the others did not!”<sup>4</sup>

## EXCEPTIONAL SENSITIVITY

- » IHC and ISH
- » DAB, red and dual detection kits
  - Load multiple kits simultaneously

# Efficiency

Help more patients

20+%

PRODUCTIVITY  
IMPROVEMENTS<sup>5</sup>

## EASY TO MAINTAIN

- » Visual pre-run checks
- » Virtually no daily maintenance
- » In-run reagent changes
- » Very low waste volumes  
26 mL/slide



## LEAN OPTIMIZED

- » “Scan & Stain” ready-to-use reagents
  - Open – run your preferred antibodies
- » Flexible slide management options
  - Case-based organization
  - Batch-based workflow
  - Continuous operation
  - Urgent/STAT slides



1. BOND Customer Testimonials  
2. American Journal of Clinical Pathology, (2008) 130, 724-730.  
3. Independent analysis commissioned by Leica Biosystems and conducted by NordiQC  
4. Alvin Martin, M.D. Medical Director of Pathology and Laboratory Services, Norton CPA Lab  
5. Independant laboratory survey

EVERYONE AGREES -  
**BOND**  
IS EASIEST TO USE<sup>6</sup>

**ENHANCED USER EXPERIENCE**

- » Highly visual
- » Quick to learn
- » Easy to use
- » Rapid run setup



**BOND-III SPECIFICATIONS**

Dimensions	755 mm (W) x 1359 mm (H) x 785mm (D) 30.5 in (W) x 53.5 in (H) x 30.9 in (D)
Weight (dry)	246 kg (542 lb.)
Slide capacity	30
Reagent container capacity	7 mL and 30 mL
Number of reagent containers	36
Bulk reagent container capacity	2 L or 5 L
Hazardous waste container capacity	5 L
External bulk waste container capacity	2 x 5 L
Power consumption	1200 VA
Maximum operating temperature	35 °C (95 °F)
Minimum operating temperature	5 °C (41 °F)
Temperature required to meet staining performance requirements	18–26 °C (64–79 °F)
Sound pressure level output (at 1 m)	< 85 dBA maximum < 65 dBA normal operation

**LEICA BIOSYSTEMS**

Leica Biosystems is a global leader in workflow solutions and automation, striving to advance cancer diagnostics to improve patients' lives. Leica Biosystems provides anatomic pathology laboratories and researchers a comprehensive product range for each step in the pathology process, from sample preparation and staining to imaging and reporting. Leica Biosystems' easy-to-use and consistently reliable offerings help improve workflow efficiency and diagnostic confidence. The company is represented in over 100 countries and is headquartered in Nussloch, Germany.

Leica Biosystems – an international company with a strong network of worldwide customer services.

For detailed contact information on your nearest sales office or distributor please visit our website: [LeicaBiosystems.com](http://LeicaBiosystems.com)

**ENHANCED MANAGEMENT OPTIONS**

**BOND-ADVANCE NETWORK**  
A SINGLE SYSTEM FOR EVEN THE LARGEST LABORATORY



The BOND-ADVANCE network removes traditional IHC limits. With a powerful central network server, BOND-ADVANCE lets you deploy up to thirty BOND instruments on a single unified network.

- » Advanced data security
- » Advanced data management
- » Advanced laboratory flexibility

**REMOTECARE**  
IMMEDIATE ATTENTION, RAPID SOLUTIONS

A better way to increase system up-time.

- » On-line RemoteCare experts quickly diagnose problems and initiate solutions
- » Many issues solved through remote intervention
- » The right expert with the correct solution quickly dispatched when on-site work is needed



**GET CONNECTED**  
REDUCE WORK AND POTENTIAL ERRORS

- » BOND LIS-ip interface
  - Automate data transfer and slide status tracking
  - Eliminate duplicate data entry
- » CEREBRO sample tracking system
  - Increase patient safety
  - Increase laboratory efficiency

