

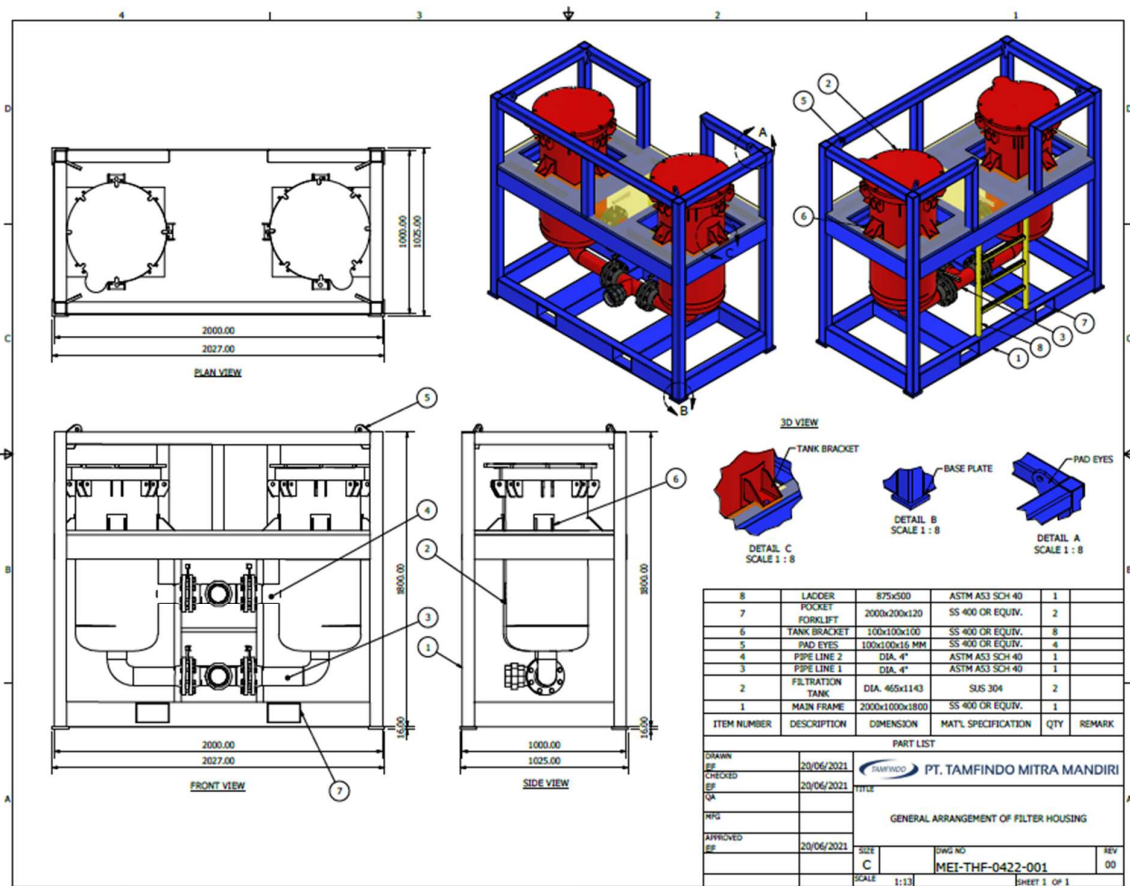
Dual Pod Filtration Unit – Skid Mounted

Equipment Information



Introduction

This compact filter unit combines the function of two filter units; a dual pod bag filter unit and dual pod cartridge filter unit. The unit allows pre-filtration, and polish filter with bags or cartridges, within one unit. The Duplex filter unit has the capability to use standard filter bags as well as standard plug-in cartridges.



Dual Pod Filtration Unit

Design Feature

- Standard type: 50 cartridges
- Compact space saving design
- Storage racks for all baskets and bag top plates
- Innovative push lever and swing-away vessel lid, easy to operate
- Swing-bolts and nuts for quick opening
- Self sealing, service friendly cover gasket
- All 4 inch valves easy to operate
- Certified hoisting slings lifting lugs and forklift pockets
- Safety valve set at 7 bar (105 Psi).

Design Specification

Max. recommended flow	10 BPM
Design pressure	100 psi
Test pressure	150 psi
Max. working temperature	60 °C
Design code frame	EN 12079-1: 2006
Safety valve set point	120 psi
Vessel closure	Rudi quick opening closure (no tools and no bolts) / swing bolt closure
Lifting	Hoisting slings (certified) and forklift pockets

Dimension

Vessel diameter	546 mm
Number of bags	50 cartridges/ vessel
Cartridge length	40" plug in type 222
Cartridge diameter	2,5" Pipe size 4"
Weight (empty)	1500 kg
Dimension (L x W x H)	200 x 80 x 189 cm

Connection/Valve/Instrument

In-/Outlet	4" Union fig. 206 inch to 4" NPT-M
Drain	1" SS316 ball valve with 1" BSP-F
Vent	1" SS316 ball valve with 1" BSP-F
Pressure relief valve	1" bronze, set point 7 bar
Main valves	4" BFV- Cast iron body, NBR seat and SS316 disc
Instruments	2 manometers; in-/outlet pressure gauges 0-150 psi (0-10 bar)

The above data is supplied solely for informational purposes and Tamfindo makes no guarantees or warranties, either express or implied, with respect to the accuracy or use of this data. All product warranties and guarantees shall be governed by the standard contract terms at the time of sale.