



2 x 50 bbls BATCH MIXER - SKID MOUNTED

Equipment Information



Introduction

The Tamfindo skid mounted 100 barrel vertical batch mixer was designed to be self supporting and allow the versatility of performing single (to 100 BBL) or dual (to 50 BBL each) slurry batches.

The mixing unit incorporates two (2) 50 barrel batch tanks with hydraulic powered bi-directional agitators. The mixing functions are accomplished by two (2) hydraulic powered centrifugal pumps and educator assembly. A diesel engine, located between batch tank skids, provides power needed for the unit's hydraulic system.

The mixing unit allows one (1) operator to perform and monitor the mixing functions from the control deck platform, located between the batch tanks. Mixing operations are accomplished through the operator's selection of remote (control panel) and manual operated components located at the control deck.



Approximate Dimension

Length: 682 cm
Width: 265 cm
Height: 271 cm
Weight: 15 tons

Batch Mixer Cap. 2 x 50 bbls



Equipment Specification

Power Unit

- Fuel tank, 60 gallon
- Pump drive
- Hydraulic pump, centrifugal pump agitator: Sunstrand 3.4 cu. in. Variable with integral charge pump # 90L055
- Hydraulic pump, centrifugal pump : Sunstrand 3.4 cu. in. Variable with integral charge pump and SAE "B" Aux. Mtg. Pad
- Hydraulic pump
- Fuel shutdown
- Throttle actuator
- Gauge, charge pressure 0-600 PSI
- Cap, fuel 4"
- Valve, shuttle
- Filter, engine lube oil
- Element, lube oil filter
- Filter, secondary fuel
- Element, secondary fuel filter

8V92T Engine

- Engine, Detroit Diesel 8V71N
- Muffler, 3 1/2" NPT
- Filter, Air
- Starter
- Heater exchanger, thermal transfer

Mixing Group

- Centrifugal pump
- Sub, female 4"
- Gauge protector, 4"
- Actuator assy, 4"
- Vacuum breaker, 1"

Mixing Tank

- Agitator, hydraulic motor : 48 cubic inch
- Agitator assy

Control Panel

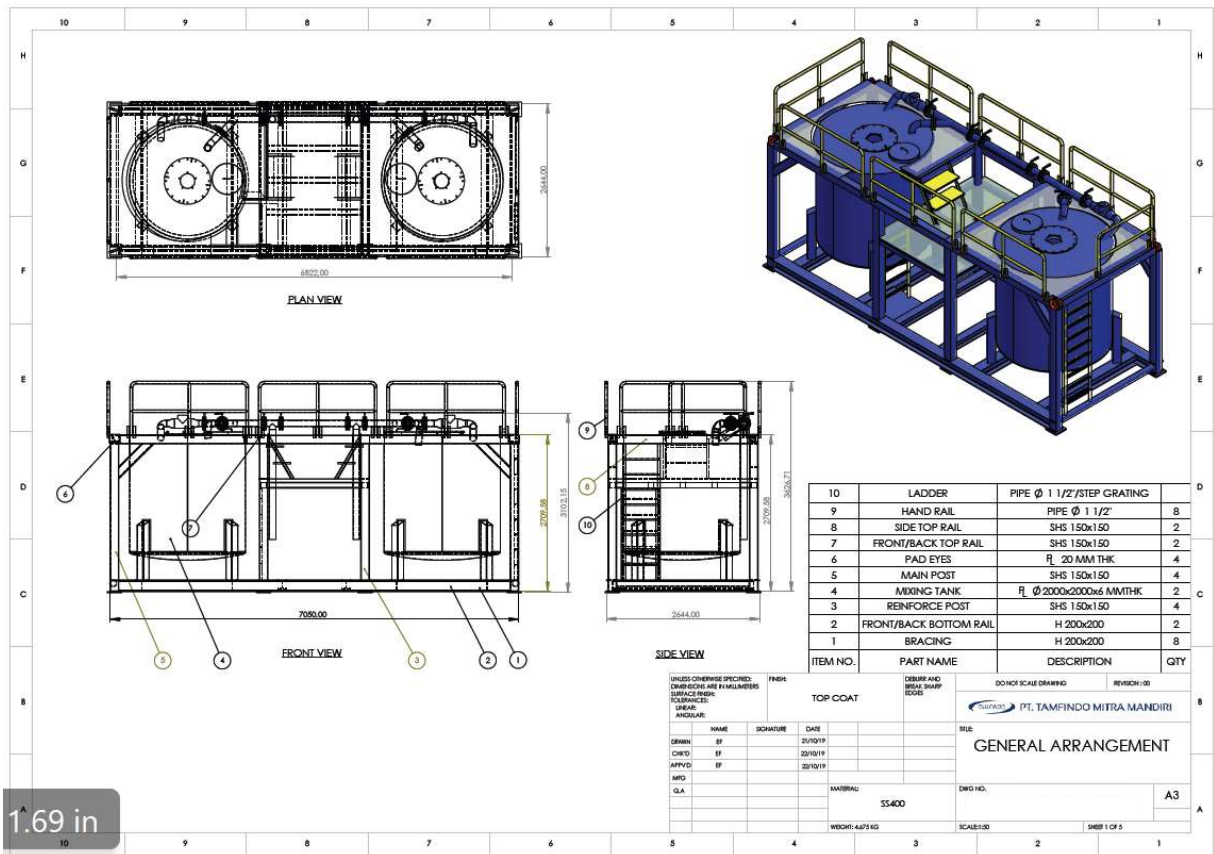
- Throttle
- Control valve, mixing pump/agitator
- Gauge, pressure - centrifugal pump discharge : 0-160 PSI
- Gauge, hydraulic pressure - centrifugal pump : 0-7000 PSI
- Gauge, hydraulic pressure - agitator : 0-5000 PSI
- Indicator, pneumatic
- Valve, control pneumatic
- Gauge, hydraulic oil temperature : 100-250 F
- Gauge, engine oil pressure : 5-100 PSI
- Gauge, water temperature : 100-265 F
- Tachometer, engine RPM : Jones 200-4200 RPM
- Valve, directional control - engine start

Hydraulic System

- Reservoir, 75 gallon
- Gauge, site
- Valve, ball 1 1/2" NPT
- Valve, pressure reducing
- Strainer, hydraulic oil
- Filter, hydraulic return
- Element, hydraulic return filter

Miscellaneous Items

- Valve, butterfly 6"
- Valve, butterfly 4"
- Coupling, victaulic 6" style 75
- Coupling, victaulic 4" style 75
- Valve, ball 1/4"



1.69 in

General Arrangement

The above data is supplied solely for informational purposes and Tamfindo makes no guarantees or warranties, either express or implied, with respect to the accuracy or use of this data. All product warranties and guarantees shall be governed by the standard contract terms at the time of sale.